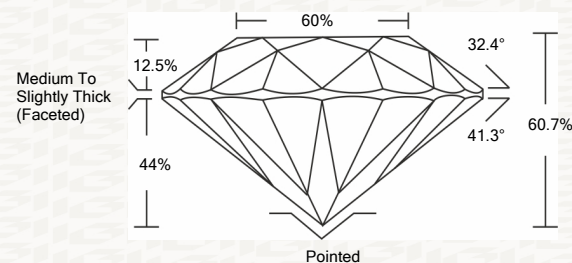




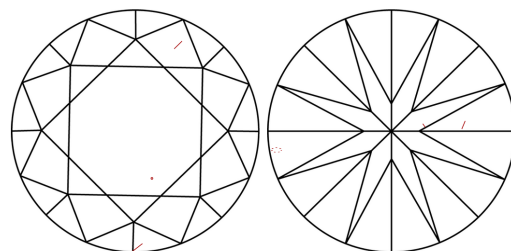
IGI GEMOLOGICAL REPORT

ADDITIONAL INFORMATION

PROPORTIONS



CLARITY CHARACTERISTICS



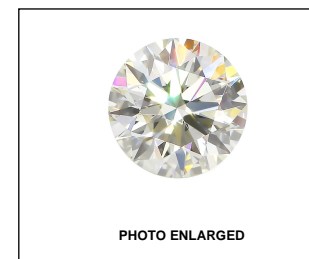
KEY TO SYMBOLS

Red symbols indicate internal characteristics. Green symbols indicate external characteristics.

GRADING SCALES

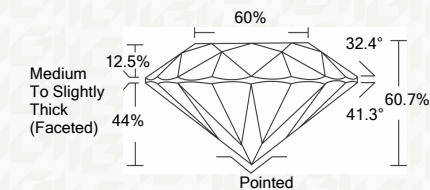
Table with 2 columns: COLOR GRADING SCALE (CL, NC, FT, VLT, LT) and CLARITY (10x) GRADING SCALE (FL, IF, VVS, VS, SI, I)

The laboratory grown diamond described in this Report (Report) has been graded, tested, analyzed, examined and/or inscribed by International Gemological Institute (I.G.I.).



IGI LABORATORY GROWN DIAMOND GRADING REPORT

10/03/2020 IGI Report Number LG442067819 Shape and Cutting Style ROUND BRILLIANT Measurements 7.71 - 7.72 X 4.68 MM GRADING RESULTS Carat Weight 1.71 CARAT Color Grade I Clarity Grade VS 2 Cut Grade EXCELLENT



ADDITIONAL GRADING INFORMATION

Polish EXCELLENT Symmetry EXCELLENT Fluorescence NONE Inscription(s) LABGROWN IGI LG442067819

IGI LABORATORY GROWN DIAMOND GRADING REPORT

10/03/2020 IGI Report Number LG442067819 Shape and Cutting Style ROUND BRILLIANT Measurements 7.71 - 7.72 X 4.68 MM

GRADING RESULTS

Carat Weight 1.71 CARAT Color Grade I Clarity Grade VS 2 Cut Grade EXCELLENT

ADDITIONAL GRADING INFORMATION

Polish EXCELLENT Symmetry EXCELLENT Fluorescence NONE Inscription(s) LABGROWN IGI LG442067819



This Report is subject to the terms and conditions

© IGI 2000, edition 2019 all rights reserved.



IGI

10/03/2020 IGI Report No. LG442067819 ROUND BRILLIANT 7.71 - 7.72 X 4.68 MM 1.71 CARAT VS 2 EXCELLENT 80.7% 60% Medium To Slightly Thick (Faceted) Pointed EXCELLENT EXCELLENT NONE LABGROWN IGI LG442067819