



IGI GEMOLOGICAL REPORT

IGI LABORATORY GROWN DIAMOND GRADING REPORT

10/08/2020

IGI Report Number LG442068503

Shape and Cutting Style ROUND BRILLIANT

Measurements 7.51 - 7.58 X 4.64 MM

GRADING RESULTS

Carat Weight 1.65 CARAT

Color Grade J

Clarity Grade VS 2

Cut Grade EXCELLENT

ADDITIONAL GRADING INFORMATION

Polish EXCELLENT

Symmetry EXCELLENT

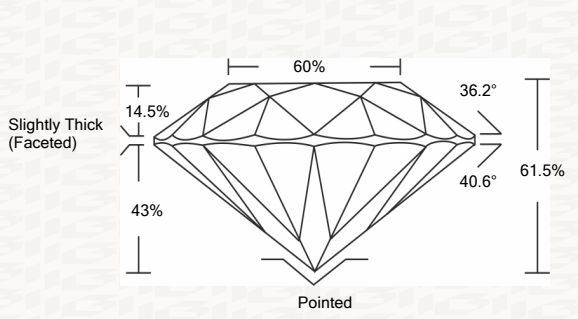
Fluorescence NONE

Inscription(s) LABGROWN IGI LG442068503

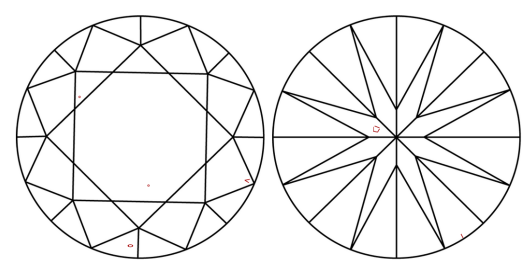


ADDITIONAL INFORMATION

PROPORTIONS



CLARITY CHARACTERISTICS



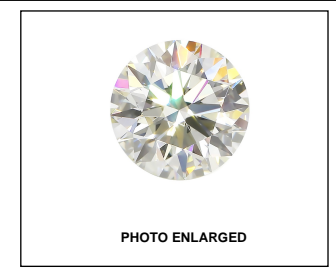
KEY TO SYMBOLS
Red symbols indicate internal characteristics.
Green symbols indicate external characteristics.

This Report is subject to the terms and conditions
© IGI 2000, edition 2019 all rights reserved.

GRADING SCALES

Table with 2 rows and 5 columns showing grading scales for Color (CL) and Clarity (10x) (CLARITY).

The laboratory grown diamond described in this Report (Report) has been graded, tested, analyzed, examined and/or inscribed by International Gemological Institute (I.G.I.).



IGI LABORATORY GROWN DIAMOND GRADING REPORT

10/08/2020

IGI Report Number LG442068503

Shape and Cutting Style ROUND BRILLIANT

Measurements 7.51 - 7.58 X 4.64 MM

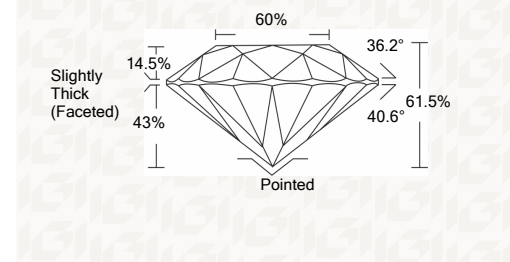
GRADING RESULTS

Carat Weight 1.65 CARAT

Color Grade J

Clarity Grade VS 2

Cut Grade EXCELLENT



ADDITIONAL GRADING INFORMATION

Polish EXCELLENT

Symmetry EXCELLENT

Fluorescence NONE

Inscription(s) LABGROWN IGI LG442068503



IGI

Summary of report details including IGI Report No. LG442068503, ROUND BRILLIANT, 7.51 - 7.58 X 4.64 MM, 1.65 CARAT, VS 2, EXCELLENT, 61.5% depth, 60% table, Slightly Thick (Faceted) girdle, Pointed cut, EXCELLENT polish and symmetry, NONE fluorescence, and LABGROWN IGI LG442068503 inscription(s).