



IGI GEMOLOGICAL REPORT

ADDITIONAL INFORMATION

GRADING SCALES

COLOR GRADING SCALE	CL	NC	FT	VL	LT	
	COLORLESS D-F	NEAR COLORLESS G-J	FAINT K-M	VERY LIGHT N-R	LIGHT S-Z	
CLARITY (10x) GRADING SCALE	FL	IF	VVS	VS	SI	I
	FLAWLESS INTERNALLY FLAWLESS	VERY VERY SLIGHTLY INCLUDED	VERY SLIGHTLY INCLUDED	SLIGHTLY INCLUDED	INCLUDED	

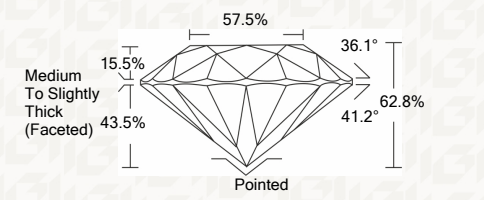
The laboratory grown diamond described in this Report (Report) has been graded, tested, analyzed, examined and/or inscribed by International Gemological Institute (I.G.I.). A laboratory grown diamond is one that has essentially the same chemical, physical and optical properties as a mined diamond, with the exception of being grown by man (a manufactured product). I.G.I. employs and utilizes those techniques and equipment currently available to I.G.I., including, without limitation, 10X magnification, corrected triplet loupe, binocular microscope, master color comparison stones, non-contact optical measuring devices, Diamond Sure™, Diamond View™, Spectrophotometer and such other instruments and/or processes as deemed appropriate by I.G.I. This Report includes advanced security features. A duly accredited gemologist or jeweler can advise you with respect to the importance of and interrelationship between cut, color, clarity and carat weight. THIS REPORT IS NEITHER A GUARANTEE, VALUATION, NOR APPRAISAL OF THE GEMSTONE DESCRIBED HEREIN. PLEASE REVIEW THE LIMITATIONS AND RESTRICTIONS SET FORTH ONLINE. FOR ADDITIONAL INFORMATION, IMPORTANT LIMITATIONS AND DISCLAIMERS, PLEASE GO TO WWW.IGI.ORG OR CALL 1-888-BUY-IGIS.

© INTERNATIONAL GEMOLOGICAL INSTITUTE, INC.

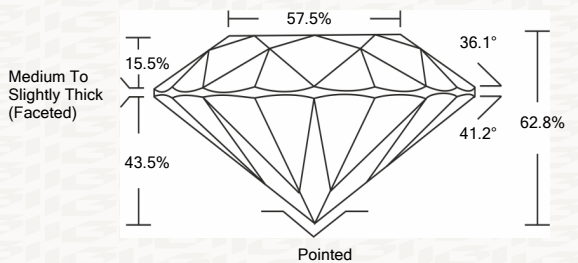
IGI LABORATORY GROWN DIAMOND GRADING REPORT

10/08/2020  
 IGI Report Number **LG442069020**  
 Shape and Cutting Style **ROUND BRILLIANT**  
 Measurements **8.33 - 8.35 X 5.24 MM**

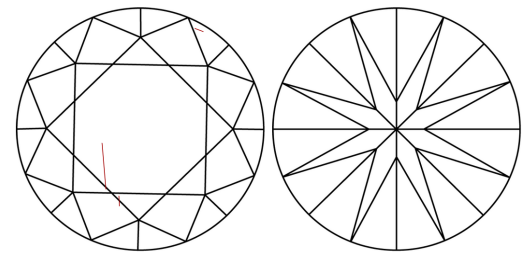
**GRADING RESULTS**  
 Carat Weight **2.24 CARATS**  
 Color Grade **I**  
 Clarity Grade **SI 2**  
 Cut Grade **EXCELLENT**



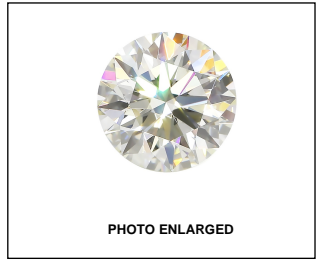
PROPORTIONS



CLARITY CHARACTERISTICS



**KEY TO SYMBOLS**  
 Red symbols indicate internal characteristics.  
 Green symbols indicate external characteristics.



ADDITIONAL GRADING INFORMATION

Polish **EXCELLENT**  
 Symmetry **EXCELLENT**  
 Fluorescence **NONE**  
 Inscription(s) **LABGROWN IGI LG442069020**

IGI LABORATORY GROWN DIAMOND GRADING REPORT

10/08/2020

IGI Report Number **LG442069020**

Shape and Cutting Style **ROUND BRILLIANT**

Measurements **8.33 - 8.35 X 5.24 MM**

GRADING RESULTS

Carat Weight **2.24 CARATS**

Color Grade **I**

Clarity Grade **SI 2**

Cut Grade **EXCELLENT**

ADDITIONAL GRADING INFORMATION

Polish **EXCELLENT**

Symmetry **EXCELLENT**

Fluorescence **NONE**

Inscription(s) **LABGROWN IGI LG442069020**



This Report is subject to the terms and conditions  
 © IGI 2000, edition 2019 all rights reserved.

THE DOCUMENT WAS PRODUCED THE FOLLOWING SECURITY MEASURES: SPECIAL DOCUMENT PAPER, INK SCREENS, WATERMARK, BACKGROUND DESIGNS, HOLOGRAM AND OTHER SECURITY FEATURES NOT LISTED AND DO EXCEED DOCUMENT SECURITY INDUSTRY DUDLINES

10/08/2020  
 IGI Report No. LG442069020  
**ROUND BRILLIANT**  
**8.33 - 8.35 X 5.24 MM**

Carat Weight	2.24 CARATS
Color Grade	I
Clarity Grade	SI 2
Cut Grade	EXCELLENT
Depth	62.8%
Table	57.8%
Grille	Medium To Slightly Thick (Faceted)
Culet	Pointed
Polish	EXCELLENT
Symmetry	EXCELLENT
Fluorescence	NONE
Inscription(s)	LABGROWN IGI LG442069020