



IGI GEMOLOGICAL REPORT

IGI LABORATORY GROWN DIAMOND GRADING REPORT

09/21/2020 IGI Report Number LG442071556

Shape and Cutting Style HEART BRILLIANT

Measurements 7.51 X 8.76 X 5.33 MM

GRADING RESULTS

Carat Weight 2.02 CARATS

Color Grade G

Clarity Grade VS 1

ADDITIONAL GRADING INFORMATION

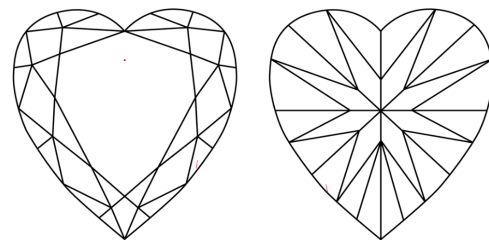
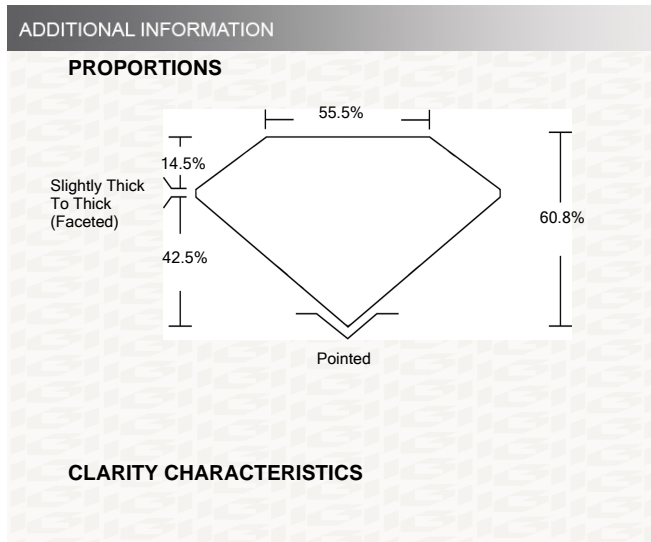
Polish EXCELLENT

Symmetry VERY GOOD

Fluorescence NONE

Inscription(s) LABGROWN IGI LG442071556

Comments: This Laboratory grown diamond was created by chemical vapor deposition process (CVD) Type IIa



KEY TO SYMBOLS

Red symbols indicate internal characteristics. Green symbols indicate external characteristics.

This Report is subject to the terms and conditions

© IGI 2000, edition 2019 all rights reserved.

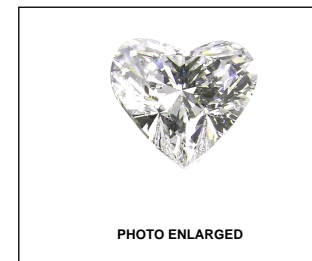
GRADING SCALES

COLOR GRADING SCALE	CL	NC	FT	VLT	LT	
	COLORLESS D-F	NEAR COLORLESS G-J	FAINT K-M	VERY LIGHT N-R	LIGHT S-Z	
CLARITY (10X) GRADING SCALE	FL	IF	VVS	VS	SI	I
	FLAWLESS INTERNALLY FLAWLESS	VERY VERY SLIGHTLY INCLUDED	VERY SLIGHTLY INCLUDED	SLIGHTLY INCLUDED	INCLUDED	INCLUDED

The laboratory grown diamond described in this Report ("Report") has been graded, tested, analyzed, examined and/or inscribed by International Gemological Institute (IGI). A laboratory grown diamond is one that has essentially the same chemical, physical and optical properties as a mined diamond, with the exception of being grown by man (a manufactured product). IGI employs and utilizes those techniques and equipment currently available to IGI, including, without limitation, 10X magnification, corrected triplet loupe, binocular microscope, master color comparison stones, non-contact-optical measuring device, Diamond Sure™, Diamond View™, Spectrophotometer and such other instruments and/or processes as deemed appropriate by IGI. This Report includes advanced security features. A duly accredited gemologist or jeweler can advise you with respect to the importance of and interrelationship between cut, color, clarity and carat weight.

THIS REPORT IS NEITHER A GUARANTEE, VALUATION, NOR APPRAISAL OF THE GEMSTONE DESCRIBED HEREIN. PLEASE REVIEW THE LIMITATIONS AND RESTRICTIONS SET FORTH ONLINE. FOR ADDITIONAL INFORMATION, IMPORTANT LIMITATIONS AND DISCLAIMERS, PLEASE GO TO WWW.IGI.ORG OR CALL 1-888-BUY-IGI.

© INTERNATIONAL GEMOLOGICAL INSTITUTE, INC.



LABGROWN IGI LG442071556

LASERSCRIBE SM



IGI LABORATORY GROWN DIAMOND GRADING REPORT

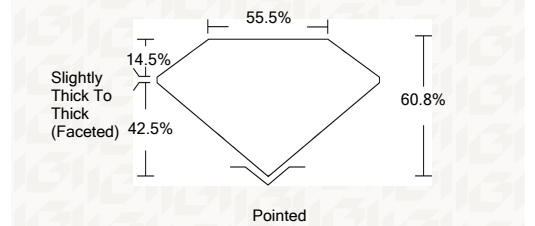
09/21/2020 IGI Report Number LG442071556 Shape and Cutting Style HEART BRILLIANT Measurements 7.51 X 8.76 X 5.33 MM

GRADING RESULTS

Carat Weight 2.02 CARATS

Color Grade G

Clarity Grade VS 1



ADDITIONAL GRADING INFORMATION

Polish EXCELLENT

Symmetry VERY GOOD

Fluorescence NONE

Inscription(s) LABGROWN IGI LG442071556

Comments: This Laboratory grown diamond was created by chemical vapor deposition process (CVD) Type IIa



IGI

09/21/2020	IGI Report No LG442071556	VS 1
HEART BRILLIANT	HEART BRILLIANT	60.8%
7.51 X 8.76 X 5.33 MM	Carat Weight 2.02 CARATS	55.5%
Color Grade G	Clarity Grade VS 1	Slightly Thick To Thick (Faceted)
	Depth 60.8%	Polished
	Table 55.5%	Polish EXCELLENT
	Girdle Slightly Thick To Thick (Faceted)	Symmetry VERY GOOD
	Culet Polished	Fluorescence NONE
		Inscription(s) LABGROWN IGI LG442071556
		Comments: This Laboratory grown diamond was created by chemical vapor deposition process (CVD) Type IIa