



IGI GEMOLOGICAL REPORT

IGI LABORATORY GROWN DIAMOND GRADING REPORT

10/14/2020
IGI Report Number LG445036224
Shape and Cutting Style ROUND BRILLIANT
Measurements 7.97 - 8.01 X 5.03 MM

GRADING RESULTS

Carat Weight 2.01 CARATS
Color Grade J
Clarity Grade SI 1
Cut Grade EXCELLENT

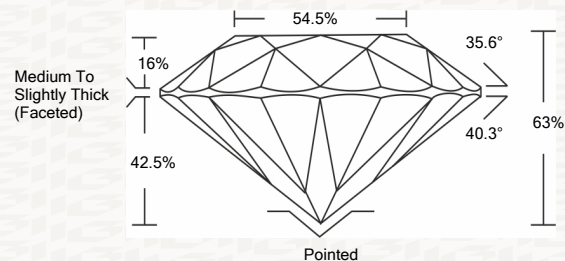
ADDITIONAL GRADING INFORMATION

Polish EXCELLENT
Symmetry EXCELLENT
Fluorescence NONE
Inscription(s) LABGROWN IGI LG445036224

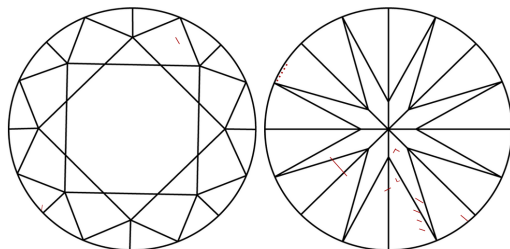


ADDITIONAL INFORMATION

PROPORTIONS



CLARITY CHARACTERISTICS



KEY TO SYMBOLS

Red symbols indicate internal characteristics.
Green symbols indicate external characteristics.

This Report is subject to the terms and conditions

© IGI 2000, edition 2019 all rights reserved.

GRADING SCALES

Table with 2 rows and 5 columns: COLOR GRADING SCALE (CL, NC, FT, VLT, LT) and CLARITY (10x) GRADING SCALE (FL, IF, VVS, VS, SI, I)

The laboratory grown diamond described in this Report (Report) has been graded, tested, analyzed, examined and/or inscribed by International Gemological Institute (IGI). A laboratory grown diamond is one that has essentially the same chemical, physical and optical properties as a mined diamond...

© INTERNATIONAL GEMOLOGICAL INSTITUTE, INC.

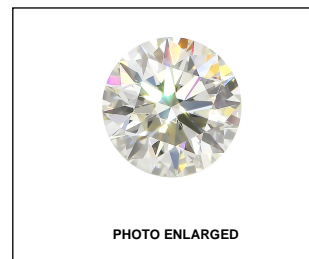


PHOTO ENLARGED



LASERSCRIBE SM

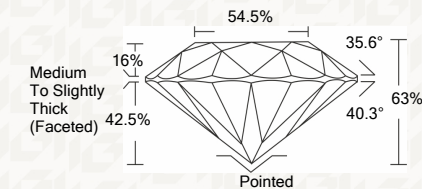


IGI LABORATORY GROWN DIAMOND GRADING REPORT

10/14/2020
IGI Report Number LG445036224
Shape and Cutting Style ROUND BRILLIANT
Measurements 7.97 - 8.01 X 5.03 MM

GRADING RESULTS

Carat Weight 2.01 CARATS
Color Grade J
Clarity Grade SI 1
Cut Grade EXCELLENT



ADDITIONAL GRADING INFORMATION

Polish EXCELLENT
Symmetry EXCELLENT
Fluorescence NONE
Inscription(s) LABGROWN IGI LG445036224



IGI

10/14/2020
IGI Report No. LG445036224
ROUND BRILLIANT
7.97 - 8.01 X 5.03 MM
Carat Weight 2.01 CARATS
Color Grade J
Clarity Grade SI 1
Cut Grade EXCELLENT
Depth 63%
Table 64.6%
Girdle Medium To Slightly Thick (Faceted)
Culet Pointed
Polish EXCELLENT
Symmetry EXCELLENT
Fluorescence NONE
Inscription(s) LABGROWN IGI LG445036224