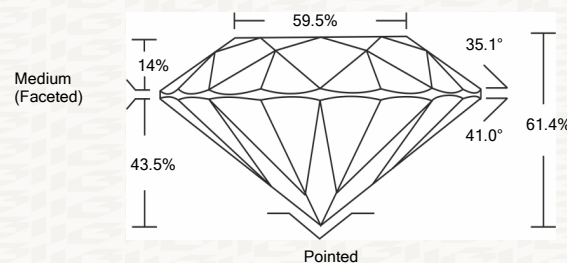




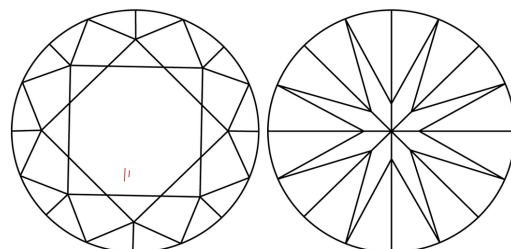
IGI GEMOLOGICAL REPORT

ADDITIONAL INFORMATION

PROPORTIONS



CLARITY CHARACTERISTICS



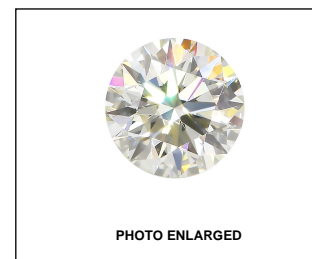
KEY TO SYMBOLS

Red symbols indicate internal characteristics. Green symbols indicate external characteristics.

GRADING SCALES

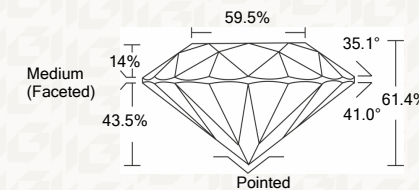
Table with 2 rows and 5 columns showing grading scales for Color (CL) and Clarity (10x) (CLARITY).

The laboratory grown diamond described in this Report (Report) has been graded, tested, analyzed, examined and/or inscribed by International Gemological Institute (I.G.I.).



IGI LABORATORY GROWN DIAMOND GRADING REPORT

10/15/2020 IGI Report Number LG445036363 Shape and Cutting Style ROUND BRILLIANT Measurements 8.14 - 8.17 X 5.01 MM GRADING RESULTS Carat Weight 2.06 CARATS Color Grade J Clarity Grade VS 2 Cut Grade IDEAL



ADDITIONAL GRADING INFORMATION

Polish EXCELLENT Symmetry EXCELLENT Fluorescence NONE Inscription(s) LABGROWN IGI LG445036363



IGI

IGI LABORATORY GROWN DIAMOND GRADING REPORT

10/15/2020 IGI Report Number LG445036363 Shape and Cutting Style ROUND BRILLIANT Measurements 8.14 - 8.17 X 5.01 MM

GRADING RESULTS

Carat Weight 2.06 CARATS Color Grade J Clarity Grade VS 2 Cut Grade IDEAL

ADDITIONAL GRADING INFORMATION

Polish EXCELLENT Symmetry EXCELLENT Fluorescence NONE Inscription(s) LABGROWN IGI LG445036363



This Report is subject to the terms and conditions

© IGI 2000, edition 2019 all rights reserved.

THE DOCUMENT WAS PRODUCED THE FOLLOWING SECURITY MEASURES: SPECIAL DOCUMENT PAPER, INK SCREENS, WATERMARK, BACKGROUND DESIGNS, HOLOGRAM AND OTHER SECURITY FEATURES NOT LISTED AND DO EXCEED DOCUMENT SECURITY INDUSTRY DUDLINES

10/15/2020 IGI Report No. LG445036363 ROUND BRILLIANT 8.14 - 8.17 X 5.01 MM Carat Weight 2.06 CARATS Color Grade J Clarity Grade VS 2 Cut Grade IDEAL Depth 61.4% Table 59.5% Girdle Medium (Faceted) Culet Pointed Polish EXCELLENT Symmetry EXCELLENT Fluorescence NONE Inscription(s) LABGROWN IGI LG445036363