



IGI GEMOLOGICAL REPORT

IGI LABORATORY GROWN DIAMOND GRADING REPORT

10/13/2020

IGI Report Number LG445036405

Shape and Cutting Style ROUND BRILLIANT

Measurements 8.34 - 8.36 X 5.07 MM

GRADING RESULTS

Carat Weight 2.18 CARATS

Color Grade J

Clarity Grade VS 1

Cut Grade IDEAL

ADDITIONAL GRADING INFORMATION

Polish EXCELLENT

Symmetry EXCELLENT

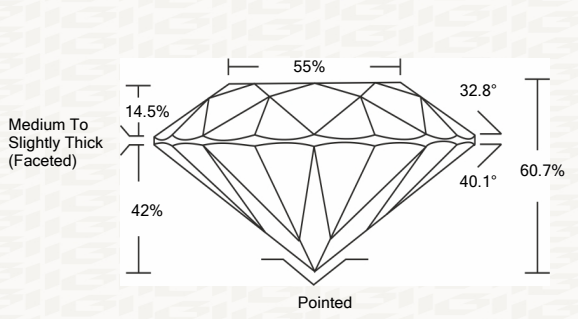
Fluorescence NONE

Inscription(s) LABGROWN IGI LG445036405

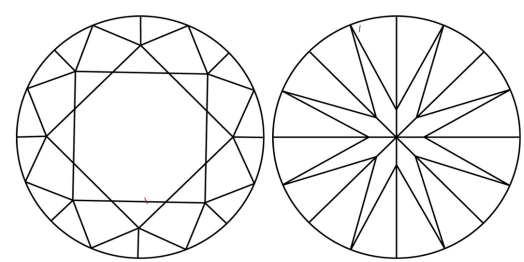


ADDITIONAL INFORMATION

PROPORTIONS



CLARITY CHARACTERISTICS



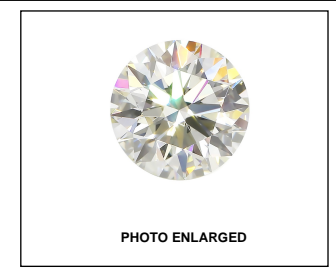
KEY TO SYMBOLS Red symbols indicate internal characteristics. Green symbols indicate external characteristics.

This Report is subject to the terms and conditions © IGI 2000, edition 2019 all rights reserved.

GRADING SCALES

Table with 2 rows and 5 columns: COLOR GRADING SCALE (CL, NC, FT, VLT, LT) and CLARITY (10x) GRADING SCALE (FL, IF, VVS, VS, SI, I)

The laboratory grown diamond described in this Report (Report) has been graded, tested, analyzed, examined and/or inscribed by International Gemological Institute (I.G.I.). A laboratory grown diamond is one that has essentially the same chemical, physical and optical properties as a mined diamond...



THE DOCUMENT WAS PRODUCED THE FOLLOWING SECURITY MEASURES: SPECIAL DOCUMENT PAPER, INK SCREENS, WATERMARK, BACKGROUND DESIGNS, HOLOGRAM AND OTHER SECURITY FEATURES NOT LISTED AND DO EXCEED DOCUMENT SECURITY INDUSTRY DUDLINES

IGI LABORATORY GROWN DIAMOND GRADING REPORT

10/13/2020

IGI Report Number LG445036405

Shape and Cutting Style ROUND BRILLIANT

Measurements 8.34 - 8.36 X 5.07 MM

GRADING RESULTS

Carat Weight 2.18 CARATS

Color Grade J

Clarity Grade VS 1

Cut Grade IDEAL

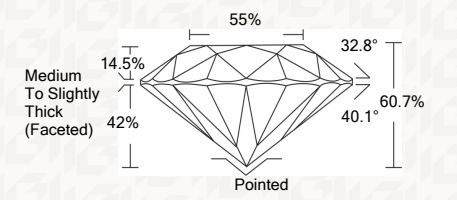
ADDITIONAL GRADING INFORMATION

Polish EXCELLENT

Symmetry EXCELLENT

Fluorescence NONE

Inscription(s) LABGROWN IGI LG445036405



IGI

Summary of report details: 10/13/2020, IGI Report No. LG445036405, ROUND BRILLIANT, 8.34 - 8.36 X 5.07 MM, 2.18 CARATS, J, VS 1, IDEAL, 80.7%, 56%, Medium To Slightly Thick (Faceted), Pointed, EXCELLENT, EXCELLENT, NONE, LABGROWN IGI LG445036405