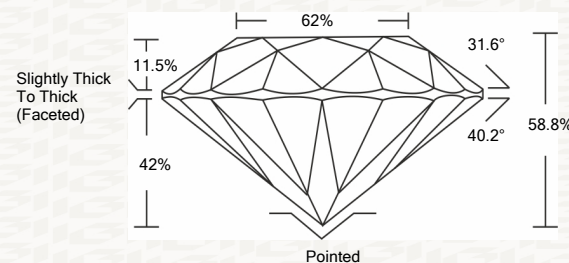




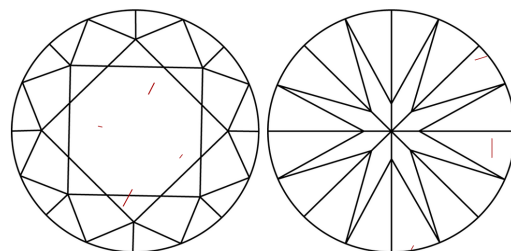
IGI GEMOLOGICAL REPORT

ADDITIONAL INFORMATION

**PROPORTIONS**



**CLARITY CHARACTERISTICS**



**KEY TO SYMBOLS**

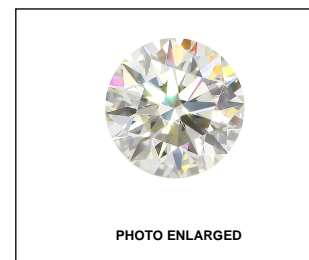
Red symbols indicate internal characteristics.  
Green symbols indicate external characteristics.

**GRADING SCALES**

COLOR GRADING SCALE	CL	NC	FT	VLT	LT	
	COLORLESS D-F	NEAR COLORLESS G-J	FAINT K-M	VERY LIGHT N-R	LIGHT S-Z	
CLARITY (10x) GRADING SCALE	FL	IF	VVS	VS	SI	I
	FLAWLESS INTERNALLY FLAWLESS	VERY VERY SLIGHTLY INCLUDED	VERY SLIGHTLY INCLUDED	SLIGHTLY INCLUDED	INCLUDED	

The laboratory grown diamond described in this Report (Report) has been graded, tested, analyzed, examined and/or inscribed by International Gemological Institute (I.G.I.). A laboratory grown diamond is one that has essentially the same chemical, physical and optical properties as a mined diamond, with the exception of being grown by man (a manufactured product). I.G.I. employs and utilizes those techniques and equipment currently available to I.G.I., including, without limitation, 10X magnification, corrected triplet loupe, binocular microscope, master color comparison stones, non-contact optical measuring devices, Diamond Sure™, Diamond View™, Spectrophotometer and such other instruments and/or processes as deemed appropriate by I.G.I. This Report includes advanced security features. A duly accredited gemologist or jeweler can advise you with respect to the importance of and interrelationship between cut, color, clarity and carat weight. THIS REPORT IS NEITHER A GUARANTEE, VALUATION, NOR APPRAISAL OF THE GEMSTONE DESCRIBED HEREIN. PLEASE REVIEW THE LIMITATIONS AND RESTRICTIONS SET FORTH ONLINE. FOR ADDITIONAL INFORMATION, IMPORTANT LIMITATIONS AND DISCLAIMERS, PLEASE GO TO WWW.IGI.ORG OR CALL 1-888-BUY-IGIS.

© INTERNATIONAL GEMOLOGICAL INSTITUTE, INC.



**IGI LABORATORY GROWN DIAMOND GRADING REPORT**

10/15/2020

IGI Report Number **LG445036549**

Shape and Cutting Style **ROUND BRILLIANT**

Measurements **8.13 - 8.17 X 4.79 MM**

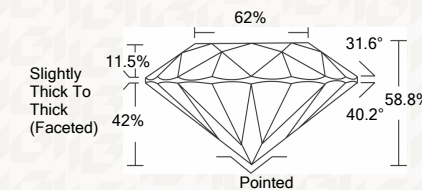
**GRADING RESULTS**

Carat Weight **2.00 CARATS**

Color Grade **I**

Clarity Grade **SI 1**

Cut Grade **VERY GOOD**



**ADDITIONAL GRADING INFORMATION**

Polish **EXCELLENT**

Symmetry **EXCELLENT**

Fluorescence **NONE**

Inscription(s) **LABGROWN IGI LG445036549**



This Report is subject to the terms and conditions

© IGI 2000, edition 2019 all rights reserved.



**IGI**

10/15/2020	IGI Report No. LG445036549	2.00 CARATS	I
	ROUND BRILLIANT		SI 1
	8.13 - 8.17 X 4.79 MM	VERY GOOD	58.8%
	Carat Weight	62%	
	Color Grade	Slightly Thick To Thick (Faceted)	Pointed
	Clarity Grade	EXCELLENT	EXCELLENT
	Cut Grade	EXCELLENT	EXCELLENT
	Depth	NONE	LABGROWN IGI
	Table		LG445036549
	Girdle		
	Culet		
	Polish		
	Symmetry		
	Fluorescence		
	Inscription(s)		