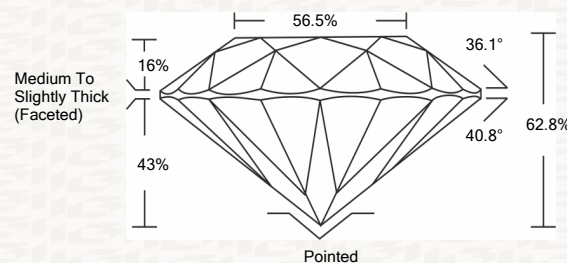




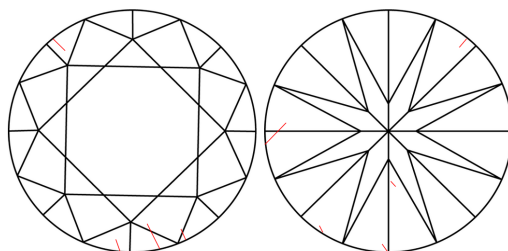
IGI GEMOLOGICAL REPORT

ADDITIONAL INFORMATION

PROPORTIONS



CLARITY CHARACTERISTICS



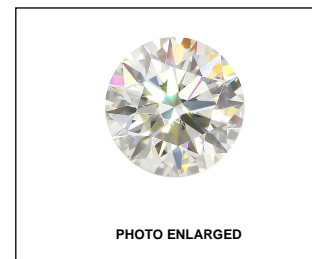
KEY TO SYMBOLS

Red symbols indicate internal characteristics. Green symbols indicate external characteristics.

GRADING SCALES

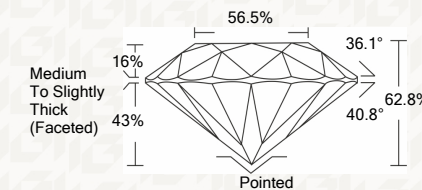
Table with 2 rows and 5 columns showing grading scales for Color (CL) and Clarity (10x) (CLARITY).

The laboratory grown diamond described in this Report (Report) has been graded, tested, analyzed, examined and/or inscribed by International Gemological Institute (I.G.I.).



IGI LABORATORY GROWN DIAMOND GRADING REPORT

10/19/2020 IGI Report Number LG445037563 Shape and Cutting Style ROUND BRILLIANT Measurements 8.42 - 8.47 X 5.31 MM GRADING RESULTS Carat Weight 2.35 CARATS Color Grade J Clarity Grade SI 2 Cut Grade EXCELLENT



ADDITIONAL GRADING INFORMATION

Polish EXCELLENT Symmetry EXCELLENT Fluorescence NONE Inscription(s) LABGROWN IGI LG445037563



IGI

IGI LABORATORY GROWN DIAMOND GRADING REPORT

10/19/2020 IGI Report Number LG445037563 Shape and Cutting Style ROUND BRILLIANT Measurements 8.42 - 8.47 X 5.31 MM

GRADING RESULTS

Carat Weight 2.35 CARATS Color Grade J Clarity Grade SI 2 Cut Grade EXCELLENT

ADDITIONAL GRADING INFORMATION

Polish EXCELLENT Symmetry EXCELLENT Fluorescence NONE Inscription(s) LABGROWN IGI LG445037563



This Report is subject to the terms and conditions

© IGI 2000, edition 2019 all rights reserved.

THE DOCUMENT WAS PRODUCED THE FOLLOWING SECURITY MEASURES: SPECIAL DOCUMENT PAPER, INK SCREENS, WATERMARK, BACKGROUND DESIGNS, HOLOGRAM AND OTHER SECURITY FEATURES NOT LISTED AND DO EXCEED DOCUMENT SECURITY INDUSTRY DUDLINES

10/19/2020 IGI Report No. LG445037563 ROUND BRILLIANT 8.42 - 8.47 X 5.31 MM Carat Weight 2.35 CARATS Color Grade J Clarity Grade SI 2 Cut Grade EXCELLENT Depth 62.8% Table 56.5% Medium To Slightly Thick (Faceted) Pointed EXCELLENT EXCELLENT EXCELLENT NONE LABGROWN IGI LG445037563