



LG445062686

IGI LABORATORY GROWN DIAMOND ID REPORT

10/26/2020 IGI Report Number LG445062686

ROUND BRILLIANT 6.16 - 6.20 X 3.78 MM

Table with 2 columns: Property and Value. Properties include Carat Weight (0.90 CARAT), Color Grade (F), Clarity Grade (SI 1), Cut Grade (VERY GOOD), Polish (VERY GOOD), Symmetry (VERY GOOD), Fluorescence (NONE), and Inscription(s) (LABGROWN IGI LG445062686).

Comments: This Laboratory grown diamond was created by chemical vapor deposition process (CVD). Type IIa

IGI GEMOLOGICAL REPORT

IGI LABORATORY GROWN DIAMOND IDENTIFICATION REPORT

10/26/2020 IGI Report Number LG445062686 Shape and Cutting Style ROUND BRILLIANT Measurements 6.16 - 6.20 X 3.78 MM

GRADING RESULTS

Carat Weight 0.90 CARAT Color Grade F Clarity Grade SI 1 Cut Grade VERY GOOD

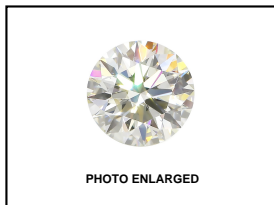
ADDITIONAL GRADING INFORMATION

Polish VERY GOOD Symmetry VERY GOOD Fluorescence NONE Inscription(s) LABGROWN IGI LG445062686

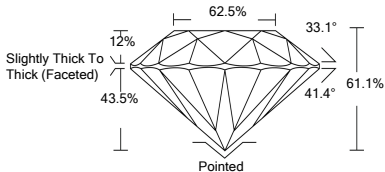
Comments: This Laboratory grown diamond was created by chemical vapor deposition process (CVD). Type IIa



ADDITIONAL INFORMATION



LASERSCRIBE SM



IGI LABORATORY GROWN DIAMOND ID REPORT

10/26/2020 IGI Report Number LG445062686

ROUND BRILLIANT 6.16 - 6.20 X 3.78 MM

Table with 2 columns: Property and Value. Properties include Carat Weight (0.90 CARAT), Color Grade (F), Clarity Grade (SI 1), Cut Grade (VERY GOOD), Polish (VERY GOOD), Symmetry (VERY GOOD), Fluorescence (NONE), and Inscription(s) (LABGROWN IGI LG445062686).

Comments: This Laboratory grown diamond was created by chemical vapor deposition process (CVD). Type IIa

This Laboratory Grown Diamond (LGD) described in this Report has been analyzed, graded and Laserscribed® by International Gemological Institute (IGI). A LGD has essentially the chemical, physical and optical properties as a mined diamond, with the exception of being man-made (a manufactured product). LGD's are typically produced by CVD (chemical vapor deposition) or by HPHT (high pressure high temperature) growth processes and may include post growth modifications to change the color. IGI utilizes the most advanced techniques and equipment currently available including, binocular microscopes, diamond color masters, non-contact-optical measuring device, a wide range analytical techniques including FTIR, UV-VIS-NIR, raman spectroscopy, and fluorescence analysis at various excitation wavelengths. This Report includes advanced security features. This Report is neither a guarantee, valuation nor appraisal and by making the report IGI does not agree to purchase or replace the article.

INTERNATIONAL GEMOLOGICAL INSTITUTE, INC



THE DOCUMENT WAS PRODUCED WITH THE FOLLOWING SECURITY MEASURES: SPECIAL DOCUMENT PAPER, INK SCREENS, WATERMARK BACKGROUND DESIGNS HOLOGRAM AND OTHER SECURITY FEATURES NOT LISTED AND DO EXCEED DOCUMENT SECURITY INDUSTRY GUIDELINES