



IGI GEMOLOGICAL REPORT

IGI LABORATORY GROWN DIAMOND GRADING REPORT

11/03/2020
IGI Report Number LG447001288
Shape and Cutting Style ROUND BRILLIANT
Measurements 8.71 - 8.76 X 5.20 MM

GRADING RESULTS

Carat Weight 2.50 CARATS
Color Grade K
Clarity Grade VS 2
Cut Grade EXCELLENT

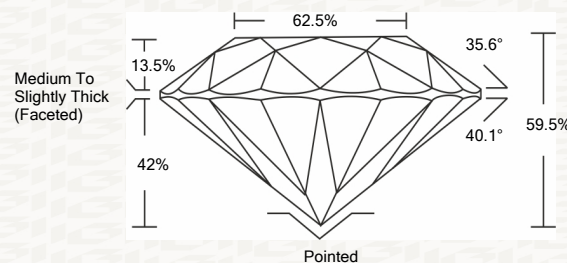
ADDITIONAL GRADING INFORMATION

Polish EXCELLENT
Symmetry EXCELLENT
Fluorescence NONE
Inscription(s) LABGROWN IGI LG447001288

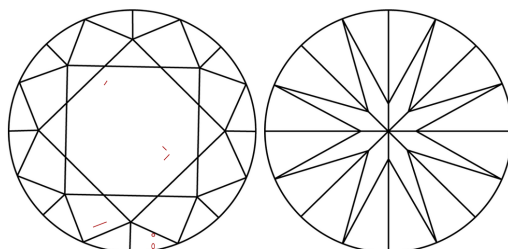


ADDITIONAL INFORMATION

PROPORTIONS



CLARITY CHARACTERISTICS



KEY TO SYMBOLS

Red symbols indicate internal characteristics.
Green symbols indicate external characteristics.

This Report is subject to the terms and conditions

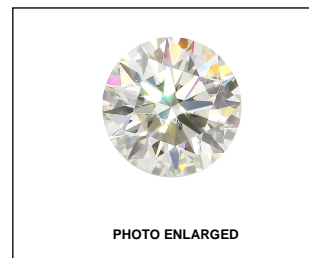
© IGI 2000, edition 2019 all rights reserved.

GRADING SCALES

Table with 2 rows and 5 columns: COLOR GRADING SCALE (CL, NC, FT, VLT, LT) and CLARITY (10x) GRADING SCALE (FL, IF, VVS, VS, SI, I)

The laboratory grown diamond described in this Report (Report) has been graded, tested, analyzed, examined and/or inscribed by International Gemological Institute (IGI). A laboratory grown diamond is one that has essentially the same chemical, physical and optical properties as a mined diamond...

© INTERNATIONAL GEMOLOGICAL INSTITUTE, INC.



IGI LABORATORY GROWN DIAMOND GRADING REPORT

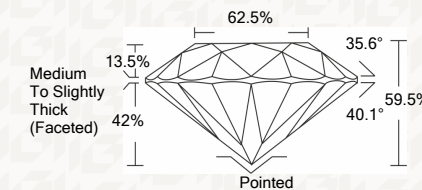
11/03/2020
IGI Report Number LG447001288
Shape and Cutting Style ROUND BRILLIANT
Measurements 8.71 - 8.76 X 5.20 MM

GRADING RESULTS

Carat Weight 2.50 CARATS
Color Grade K
Clarity Grade VS 2
Cut Grade EXCELLENT

ADDITIONAL GRADING INFORMATION

Polish EXCELLENT
Symmetry EXCELLENT
Fluorescence NONE
Inscription(s) LABGROWN IGI LG447001288



IGI

Summary table of report details: IGI Report No. LG447001288, ROUND BRILLIANT, 8.71 - 8.76 X 5.20 MM, 2.50 CARATS, K, VS 2, EXCELLENT, 89.5%, 62.5%, Medium To Slightly Thick (Faceted), Pointed, EXCELLENT, EXCELLENT, NONE, LABGROWN IGI LG447001288