



ELECTRONIC COPY

LG447098250

IGI GEMOLOGICAL REPORT

ADDITIONAL INFORMATION

GRADING SCALES

COLOR GRADING SCALE	CL	NC	FT	VL	LT	
	COLORLESS D-F	NEAR COLORLESS G-J	FAINT K-M	VERY LIGHT N-R	LIGHT S-Z	
CLARITY (10x) GRADING SCALE	FL	IF	VVS	VS	SI	I
	FLAWLESS INTERNALLY FLAWLESS	VERY VERY SLIGHTLY INCLUDED	VERY SLIGHTLY INCLUDED	SLIGHTLY INCLUDED	INCLUDED	

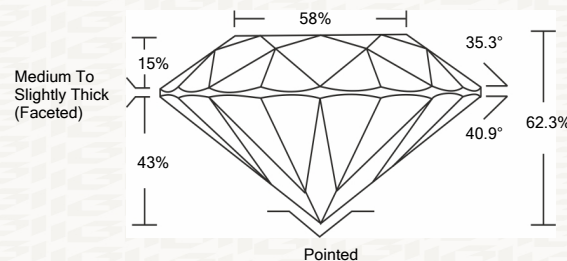
The laboratory grown diamond described in this Report (Report) has been graded, tested, analyzed, examined and/or inscribed by International Gemological Institute (I.G.I.). A laboratory grown diamond is one that has essentially the same chemical, physical and optical properties as a mined diamond, with the exception of being grown by man (a manufactured product). I.G.I. employs and utilizes those techniques and equipment currently available to I.G.I., including, without limitation, 10X magnification, corrected triplet loupe, binocular microscope, master color comparison stones, non-contact optical measuring devices, Diamond Sure™, Diamond View™, Spectrophotometer and such other instruments and/or processes as deemed appropriate by I.G.I. This Report includes advanced security features. A duly accredited gemologist or jeweler can advise you with respect to the importance of and interrelationship between cut, color, clarity and carat weight. THIS REPORT IS NEITHER A GUARANTEE, VALUATION, NOR APPRAISAL OF THE GEMSTONE DESCRIBED HEREIN. PLEASE REVIEW THE LIMITATIONS AND RESTRICTIONS SET FORTH ONLINE. FOR ADDITIONAL INFORMATION, IMPORTANT LIMITATIONS AND DISCLAIMERS, PLEASE GO TO WWW.IGI.ORG OR CALL 1-888-BUY-IGIS.

© INTERNATIONAL GEMOLOGICAL INSTITUTE, INC.

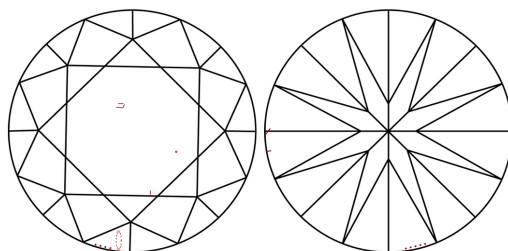
IGI LABORATORY GROWN DIAMOND GRADING REPORT

11/09/2020
 IGI Report Number **LG447098250**
 Shape and Cutting Style **ROUND BRILLIANT**
 Measurements **7.74 - 7.81 X 4.85 MM**
GRADING RESULTS
 Carat Weight **1.83 CARAT**
 Color Grade **K**
 Clarity Grade **SI 1**
 Cut Grade **IDEAL**

PROPORTIONS

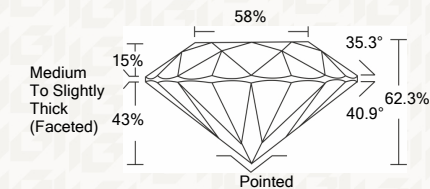
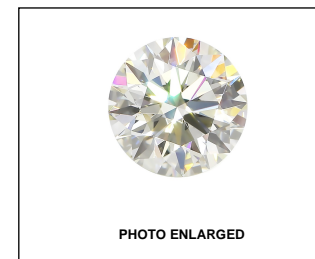


CLARITY CHARACTERISTICS



KEY TO SYMBOLS

Red symbols indicate internal characteristics.
 Green symbols indicate external characteristics.



ADDITIONAL GRADING INFORMATION

Polish **EXCELLENT**
 Symmetry **EXCELLENT**
 Fluorescence **NONE**
 Inscription(s) **LABGROWN IGI LG447098250**

Comments: Faint Brown

IGI LABORATORY GROWN DIAMOND GRADING REPORT

11/09/2020
 IGI Report Number **LG447098250**
 Shape and Cutting Style **ROUND BRILLIANT**
 Measurements **7.74 - 7.81 X 4.85 MM**

GRADING RESULTS

Carat Weight **1.83 CARAT**
 Color Grade **K**
 Clarity Grade **SI 1**
 Cut Grade **IDEAL**

ADDITIONAL GRADING INFORMATION

Polish **EXCELLENT**
 Symmetry **EXCELLENT**
 Fluorescence **NONE**
 Inscription(s) **LABGROWN IGI LG447098250**
 Comments: Faint Brown



This Report is subject to the terms and conditions

© IGI 2000, edition 2019 all rights reserved.



IGI

11/09/2020
 IGI Report No. LG447098250
 ROUND BRILLIANT
 7.74 - 7.81 X 4.85 MM

Carat Weight **1.83 CARAT**
 Color Grade **K**
 Clarity Grade **SI 1**
 Depth **IDEAL**
 Table **62.3%**
 Girdle **65%**
 Culet **Medium To Slightly Thick (Faceted)**
 Polish **Pointed**
 Symmetry **EXCELLENT**
 Fluorescence **EXCELLENT**
 Inscription(s) **NONE**
LABGROWN IGI LG447098250

Comments: Faint Brown