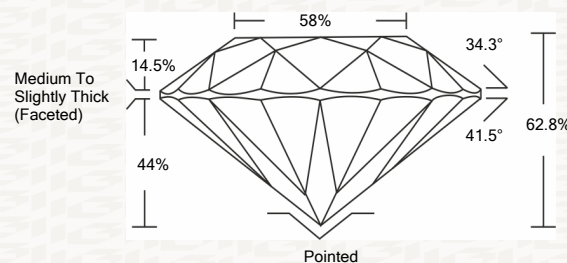




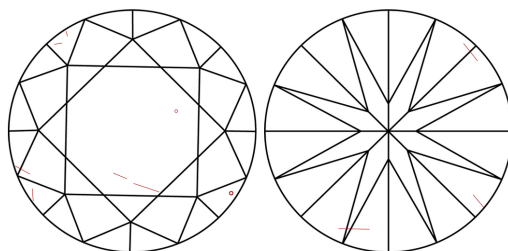
IGI GEMOLOGICAL REPORT

ADDITIONAL INFORMATION

PROPORTIONS



CLARITY CHARACTERISTICS



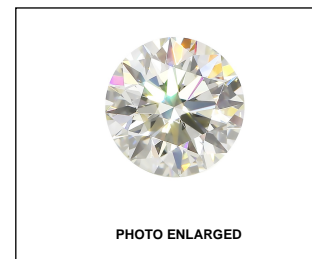
KEY TO SYMBOLS

Red symbols indicate internal characteristics. Green symbols indicate external characteristics.

GRADING SCALES

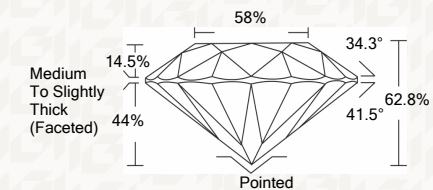
Table with 2 rows and 5 columns showing grading scales for Color and Clarity.

The laboratory grown diamond described in this Report (Report) has been graded, tested, analyzed, examined and/or inscribed by International Gemological Institute (I.G.I.).



IGI LABORATORY GROWN DIAMOND GRADING REPORT

11/11/2020 IGI Report Number LG447098934 Shape and Cutting Style ROUND BRILLIANT Measurements 7.79 - 7.80 X 4.89 MM GRADING RESULTS Carat Weight 1.83 CARAT Color Grade K Clarity Grade SI 1 Cut Grade EXCELLENT



ADDITIONAL GRADING INFORMATION

Polish EXCELLENT Symmetry EXCELLENT Fluorescence NONE Inscription(s) LABGROWN IGI LG447098934

IGI LABORATORY GROWN DIAMOND GRADING REPORT

11/11/2020 IGI Report Number LG447098934 Shape and Cutting Style ROUND BRILLIANT Measurements 7.79 - 7.80 X 4.89 MM

GRADING RESULTS

Carat Weight 1.83 CARAT Color Grade K Clarity Grade SI 1 Cut Grade EXCELLENT

ADDITIONAL GRADING INFORMATION

Polish EXCELLENT Symmetry EXCELLENT Fluorescence NONE Inscription(s) LABGROWN IGI LG447098934



This Report is subject to the terms and conditions

© IGI 2000, edition 2019 all rights reserved.



IGI

11/11/2020 IGI Report No. LG447098934 ROUND BRILLIANT 7.79 - 7.80 X 4.89 MM 1.83 CARAT K SI 1 EXCELLENT 62.8% 58% Medium To Slightly Thick (Faceted) Pointed EXCELLENT EXCELLENT NONE LABGROWN IGI LG447098934