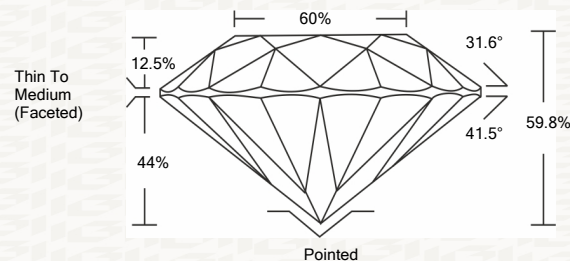




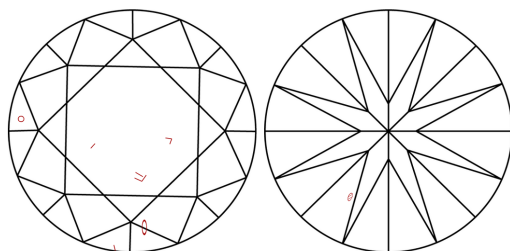
IGI GEMOLOGICAL REPORT

ADDITIONAL INFORMATION

PROPORTIONS



CLARITY CHARACTERISTICS



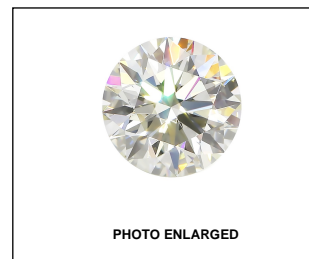
KEY TO SYMBOLS

Red symbols indicate internal characteristics. Green symbols indicate external characteristics.

GRADING SCALES

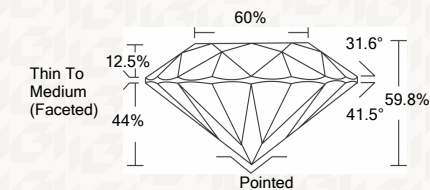
Table with 2 rows and 5 columns showing grading scales for Color (CL, NC, FT, VLT, LT) and Clarity (10x) (FL, IF, VVS, VS, SI, I).

The laboratory grown diamond described in this Report (Report) has been graded, tested, analyzed, examined and/or inscribed by International Gemological Institute (I.G.I.).



IGI LABORATORY GROWN DIAMOND GRADING REPORT

11/10/2020 IGI Report Number LG447098954 Shape and Cutting Style ROUND BRILLIANT Measurements 8.75 - 8.77 X 5.24 MM GRADING RESULTS Carat Weight 2.41 CARATS Color Grade J Clarity Grade SI 1 Cut Grade EXCELLENT



ADDITIONAL GRADING INFORMATION

Polish EXCELLENT Symmetry EXCELLENT Fluorescence NONE Inscription(s) LABGROWN IGI LG447098954

IGI LABORATORY GROWN DIAMOND GRADING REPORT

11/10/2020 IGI Report Number LG447098954 Shape and Cutting Style ROUND BRILLIANT Measurements 8.75 - 8.77 X 5.24 MM

GRADING RESULTS

Carat Weight 2.41 CARATS Color Grade J Clarity Grade SI 1 Cut Grade EXCELLENT

ADDITIONAL GRADING INFORMATION

Polish EXCELLENT Symmetry EXCELLENT Fluorescence NONE Inscription(s) LABGROWN IGI LG447098954



This Report is subject to the terms and conditions

© IGI 2000, edition 2019 all rights reserved.



IGI

11/10/2020 IGI Report No. LG447098954 ROUND BRILLIANT 8.75 - 8.77 X 5.24 MM 2.41 CARATS J SI 1 EXCELLENT 59.8% 60% Thin To Medium (Faceted) Pointed EXCELLENT EXCELLENT NONE LABGROWN IGI LG447098954