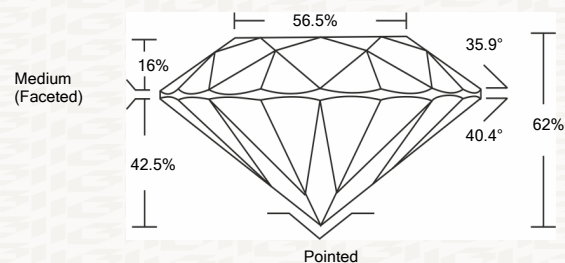




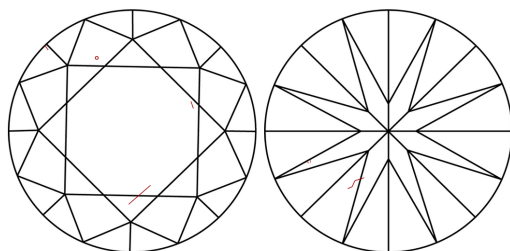
IGI GEMOLOGICAL REPORT

ADDITIONAL INFORMATION

PROPORTIONS



CLARITY CHARACTERISTICS



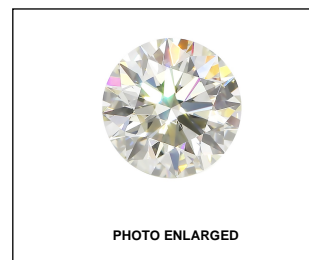
KEY TO SYMBOLS

Red symbols indicate internal characteristics. Green symbols indicate external characteristics.

GRADING SCALES

Table with 2 rows and 5 columns showing grading scales for Color (CL) and Clarity (10x) across various categories like Colorless, Near Colorless, Faint, Very Light, and Light.

The laboratory grown diamond described in this Report (Report) has been graded, tested, analyzed, examined and/or inscribed by International Gemological Institute (I.G.I.). A laboratory grown diamond is one that has essentially the same chemical, physical and optical properties as a mined diamond...

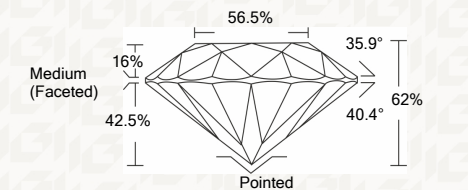


IGI LABORATORY GROWN DIAMOND GRADING REPORT

11/11/2020 IGI Report Number LG447099357 Shape and Cutting Style ROUND BRILLIANT Measurements 8.08 - 8.12 X 5.02 MM

GRADING RESULTS

Carat Weight 2.03 CARATS Color Grade I Clarity Grade SI 1 Cut Grade IDEAL



ADDITIONAL GRADING INFORMATION

Polish EXCELLENT Symmetry EXCELLENT Fluorescence NONE Inscription(s) LABGROWN IGI LG447099357

IGI LABORATORY GROWN DIAMOND GRADING REPORT

11/11/2020 IGI Report Number LG447099357 Shape and Cutting Style ROUND BRILLIANT Measurements 8.08 - 8.12 X 5.02 MM

GRADING RESULTS

Carat Weight 2.03 CARATS Color Grade I Clarity Grade SI 1 Cut Grade IDEAL

ADDITIONAL GRADING INFORMATION

Polish EXCELLENT Symmetry EXCELLENT Fluorescence NONE Inscription(s) LABGROWN IGI LG447099357



This Report is subject to the terms and conditions

© IGI 2000, edition 2019 all rights reserved.



IGI

11/11/2020 IGI Report No. LG447099357 ROUND BRILLIANT 8.08 - 8.12 X 5.02 MM Carat Weight 2.03 CARATS Color Grade I Clarity Grade SI 1 Cut Grade IDEAL Depth 62% Table 56.5% Girdle Medium (Faceted) Culet Pointed Polish EXCELLENT Symmetry EXCELLENT Fluorescence NONE Inscription(s) LABGROWN IGI LG447099357