



**INTERNATIONAL  
GEMOLOGICAL  
INSTITUTE**

**ELECTRONIC COPY**

**LABORATORY GROWN DIAMOND REPORT**

**LG450012491**

**IGI LABORATORY GROWN  
DIAMOND ID REPORT**

11/03/2020

IGI Report Number **LG450012491**

**EMERALD CUT**

**6.12 x 4.19 x 2.88 MM**

Carat Weight 0.74 CARAT

Color Grade E

Clarity Grade SI 2

Polish VERY GOOD

Symmetry GOOD

Fluorescence NONE

Inscription(s) LABGROWN IGI  
LG450012491

Comments: This Laboratory grown diamond was created by high pressure high temperature process (HPHT).  
Type II

**IGI GEMOLOGICAL REPORT**

**IGI LABORATORY GROWN DIAMOND IDENTIFICATION REPORT**

11/03/2020

IGI Report Number **LG450012491**

Shape and Cutting Style **EMERALD CUT**

Measurements **6.12 x 4.19 x 2.88 MM**

**GRADING RESULTS**

Carat Weight 0.74 CARAT

Color Grade E

Clarity Grade SI 2

**ADDITIONAL GRADING INFORMATION**

Polish VERY GOOD

Symmetry GOOD

Fluorescence NONE

Inscription(s) **LABGROWN IGI LG450012491**

Comments: This Laboratory grown diamond was created by high pressure high temperature process (HPHT).  
Type II



This Laboratory Grown Diamond (LGD) described in this Report has been analyzed, graded and Laserscribed® by International Gemological Institute (IGI). A LGD has essentially the chemical, physical and optical properties as a mined diamond, with the exception of being man-made (a manufactured product). LGD's are typically produced by CVD (chemical vapor deposition) or by HPHT (high pressure high temperature) growth processes and may include post growth modifications to change the color. IGI utilizes the most advanced techniques and equipment currently available including, binocular microscopes, diamond color masters, non-contact-optical measuring device, a wide range analytical techniques including FTIR, UV-VIS-NIR, raman spectroscopy, and fluorescence analysis at various excitation wavelengths. This Report includes advanced security features. This Report is neither a guarantee, valuation nor appraisal and by making the report IGI does not agree to purchase or replace the article.  
**INTERNATIONAL GEMOLOGICAL INSTITUTE, INC**

For Terms & Conditions, please visit [www.igi.org](http://www.igi.org)

**ADDITIONAL INFORMATION**

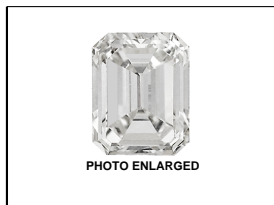
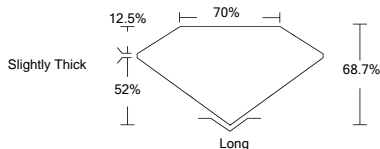


PHOTO ENLARGED



LABGROWN IGI LG450012491

**LASERSCRIBE<sup>SM</sup>**



**IGI LABORATORY GROWN  
DIAMOND ID REPORT**

11/03/2020

IGI Report Number **LG450012491**

**EMERALD CUT**

**6.12 x 4.19 x 2.88 MM**

Carat Weight 0.74 CARAT

Color Grade E

Clarity Grade SI 2

Polish VERY GOOD

Symmetry GOOD

Fluorescence NONE

Inscription(s) LABGROWN IGI  
LG450012491

Comments: This Laboratory grown diamond was created by high pressure high temperature process (HPHT).  
Type II