



IGI GEMOLOGICAL REPORT

ADDITIONAL INFORMATION

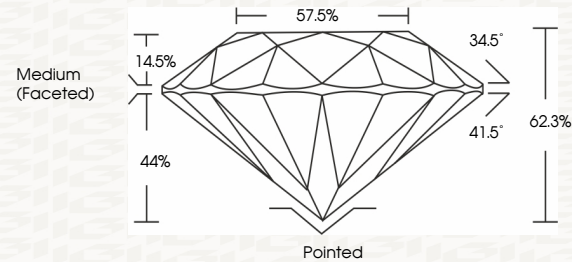
GRADING SCALES

**IGI LABORATORY GROWN DIAMOND GRADING REPORT**

**PROPORTIONS**

COLOR GRADING SCALE	CL COLORLESS D-F	NC NEAR COLORLESS G-J	FT FAINT K-M	VLT VERY LIGHT N-R	LT LIGHT S-Z	
CLARITY (10x) GRADING SCALE	FL FLAWLESS INTERNALLY FLAWLESS	IF VERY VERY SLIGHTLY INCLUDED	VVS VERY SLIGHTLY INCLUDED	VS VERY SLIGHTLY INCLUDED	SI SLIGHTLY INCLUDED	I INCLUDED

12/02/2020



The laboratory grown diamond described in this Report ("Report") has been graded, tested, analyzed, examined and/or inscribed by International Gemological Institute (IGI). A laboratory grown diamond is one that has essentially the same chemical, physical and optical properties as a mined diamond, with the exception of being grown by man (a manufactured product). IGI employs and utilizes those techniques and equipment currently available to IGI, including, without limitation, 10X magnification, corrected triplet loupe, binocular microscope, master color comparison stones, non-contact optical measuring device, Diamond Sure™, Diamond View™, Spectrophotometer and such other instruments and/or processes as deemed appropriate by IGI. This Report includes advanced security features. A duly accredited gemologist or jeweler can advise you with respect to the importance of and interrelationship between cut, color, clarity and carat weight.  
**THIS REPORT IS NEITHER A GUARANTEE, VALUATION, NOR APPRAISAL OF THE GEMSTONE DESCRIBED HEREIN. PLEASE REVIEW THE LIMITATIONS AND RESTRICTIONS SET FORTH ONLINE FOR ADDITIONAL INFORMATION, IMPORTANT LIMITATIONS AND DISCLAIMERS, PLEASE GO TO WWW.IGI.ORG OR CALL 1-888-BUY-IGI.**

© INTERNATIONAL GEMOLOGICAL INSTITUTE, INC.

**IGI LABORATORY GROWN DIAMOND GRADING REPORT**

IGI Report Number **LG450019953**

12/02/2020

Shape and Cutting Style **ROUND BRILLIANT**

IGI Report Number

**LG450019953**

Measurements **7.51 - 7.59 X 4.70 MM**

Shape and Cutting Style

**ROUND BRILLIANT**

**GRADING RESULTS**

Measurements

**7.51 - 7.59 X 4.70 MM**

Carat Weight **1.63 CARAT**

**GRADING RESULTS**

Carat Weight **1.63 CARAT**

Color Grade **H**

Color Grade **H**

Clarity Grade **SI 1**

Clarity Grade **SI 1**

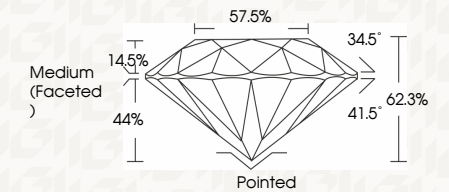
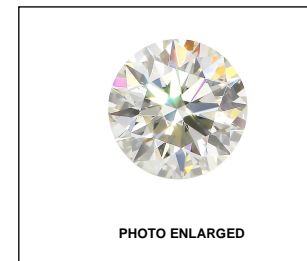
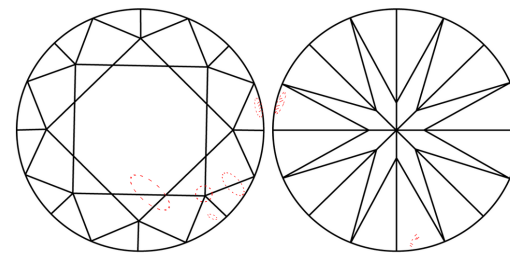
Cut Grade **EXCELLENT**

Cut Grade **EXCELLENT**

**ADDITIONAL GRADING INFORMATION**

**CLARITY CHARACTERISTICS**

Polish **EXCELLENT**



Symmetry **EXCELLENT**

**ADDITIONAL GRADING INFORMATION**

Fluorescence **NONE**

Polish **EXCELLENT**

Inscription(s) **LABGROWN IGI LG450019953**

Symmetry **EXCELLENT**

Fluorescence **NONE**

Inscription(s) **LABGROWN IGI LG450019953**

Comments: This Chemical Vapor Deposition (CVD) laboratory grown diamond is classified as Type IIa

Comments: This Chemical Vapor Deposition (CVD) laboratory grown diamond is classified as Type IIa

**KEY TO SYMBOLS**

Red symbols indicate internal characteristics.  
Green symbols indicate external characteristics.



**LASERSCRIBE SM**



This Report is subject to the terms and conditions

© IGI 2000, edition 2019 all rights reserved.

THE DOCUMENT WAS PRODUCED WITH THE FOLLOWING SECURITY MEASURES: SPECIAL DOCUMENT PAPER, INK SCREENS, WATERMARK BACKGROUND DESIGNS HOLOGRAM AND OTHER SECURITY FEATURES NOT LISTED AND DO EXCEED DOCUMENT SECURITY INDUSTRY GUIDELINES



**IGI**

12/02/2020  
IGI Report No. LG450019953  
**ROUND BRILLIANT**  
**7.51 - 7.59 X 4.70 MM**  
Carat Weight **1.63 CARAT**  
Color Grade **H**  
Clarity Grade **SI 1**  
Cut Grade **EXCELLENT**  
Depth **62.3%**  
Table **57.5%**  
Girdle **Medium (Faceted)**  
Culet **Pointed**  
Polish **EXCELLENT**  
Symmetry **EXCELLENT**  
Fluorescence **NONE**  
Inscription(s) **LABGROWN IGI LG450019953**  
Comments: This Chemical Vapor Deposition (CVD) laboratory grown diamond is classified as Type IIa