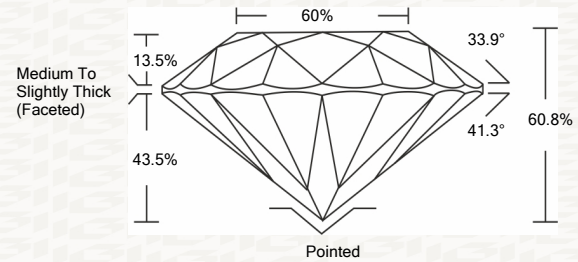




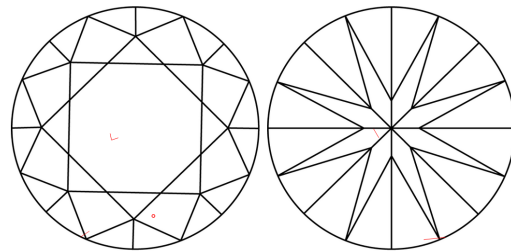
IGI GEMOLOGICAL REPORT

ADDITIONAL INFORMATION

PROPORTIONS



CLARITY CHARACTERISTICS



KEY TO SYMBOLS

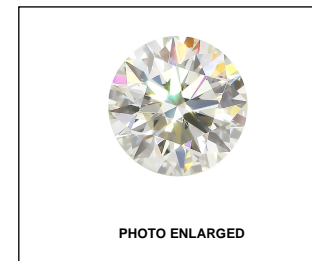
Red symbols indicate internal characteristics. Green symbols indicate external characteristics.

This Report is subject to the terms and conditions © IGI 2000, edition 2019 all rights reserved.

GRADING SCALES

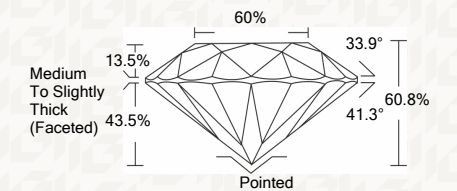
Table with 2 rows and 5 columns: COLOR GRADING SCALE (CL, NC, FT, VLT, LT) and CLARITY (10x) GRADING SCALE (FL, IF, VVS, VS, SI, I)

The laboratory grown diamond described in this Report (Report) has been graded, tested, analyzed, examined and/or inscribed by International Gemological Institute (IGI). A laboratory grown diamond is one that has essentially the same chemical, physical and optical properties as a mined diamond...



IGI LABORATORY GROWN DIAMOND GRADING REPORT

11/10/2020 IGI Report Number LG450028054 Shape and Cutting Style ROUND BRILLIANT Measurements 6.54 - 6.57 X 3.98 MM GRADING RESULTS Carat Weight 1.05 CARAT Color Grade I Clarity Grade SI 1 Cut Grade EXCELLENT



ADDITIONAL GRADING INFORMATION

Polish EXCELLENT Symmetry EXCELLENT Fluorescence NONE Inscription(s) LABGROWN IGI LG450028054

Comments: This Laboratory grown diamond was created by chemical vapor deposition process (CVD). Type IIa



11/10/2020 IGI Report No. LG450028054 ROUND BRILLIANT 6.54 - 6.57 X 3.98 MM 1.05 CARAT I EXCELLENT SI 1 EXCELLENT 60.8% 60% Medium To Slightly Thick (Faceted) Pointed EXCELLENT EXCELLENT NONE LABGROWN IGI LG450028054 Comments: This Laboratory grown diamond was created by chemical vapor deposition process (CVD). Type IIa

THE DOCUMENT WAS PRODUCED WITH THE FOLLOWING SECURITY MEASURES: SPECIAL DOCUMENT PAPER, INK SCREENS, WATERMARK BACKGROUND DESIGNS HOLOGRAM AND OTHER SECURITY FEATURES NOT LISTED AND DO EXCEED DOCUMENT SECURITY INDUSTRY GUIDELINES