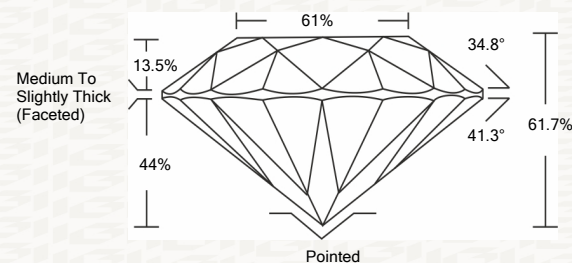




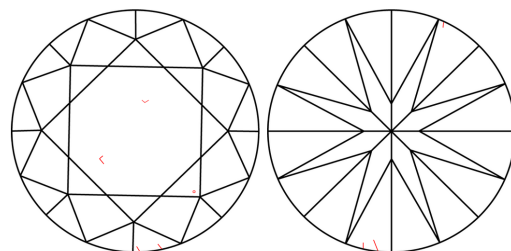
IGI GEMOLOGICAL REPORT

ADDITIONAL INFORMATION

PROPORTIONS



CLARITY CHARACTERISTICS



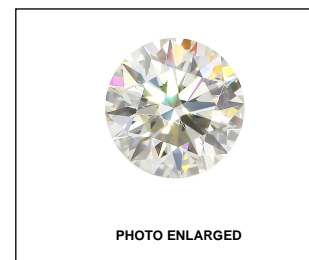
KEY TO SYMBOLS

Red symbols indicate internal characteristics. Green symbols indicate external characteristics.

GRADING SCALES

Table with 2 rows and 5 columns showing grading scales for Color (CL) and Clarity (10x) across various categories like D-F, G-J, K-M, N-R, S-Z, FL, IF, VVS, VS, SI, I.

The laboratory grown diamond described in this Report (Report) has been graded, tested, analyzed, examined and/or inscribed by International Gemological Institute (I.G.I.). A laboratory grown diamond is one that has essentially the same chemical, physical and optical properties as a mined diamond...

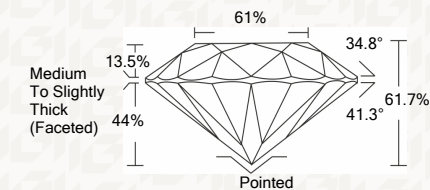


IGI LABORATORY GROWN DIAMOND GRADING REPORT

12/02/2020 IGI Report Number LG451055453 Shape and Cutting Style ROUND BRILLIANT Measurements 7.63 - 7.65 X 4.72 MM

GRADING RESULTS

Carat Weight 1.71 CARAT Color Grade J Clarity Grade VS 2 Cut Grade EXCELLENT



ADDITIONAL GRADING INFORMATION

Polish EXCELLENT Symmetry EXCELLENT Fluorescence NONE Inscription(s) LABGROWN IGI LG451055453

IGI LABORATORY GROWN DIAMOND GRADING REPORT

12/02/2020 IGI Report Number LG451055453 Shape and Cutting Style ROUND BRILLIANT Measurements 7.63 - 7.65 X 4.72 MM

GRADING RESULTS

Carat Weight 1.71 CARAT Color Grade J Clarity Grade VS 2 Cut Grade EXCELLENT

ADDITIONAL GRADING INFORMATION

Polish EXCELLENT Symmetry EXCELLENT Fluorescence NONE Inscription(s) LABGROWN IGI LG451055453



IGI

This Report is subject to the terms and conditions

© IGI 2000, edition 2019 all rights reserved.

THE DOCUMENT WAS PRODUCED THE FOLLOWING SECURITY MEASURES: SPECIAL DOCUMENT PAPER, INK SCREENS, WATERMARK, BACKGROUND DESIGNS, HOLOGRAM AND OTHER SECURITY FEATURES NOT LISTED AND DO EXCEED DOCUMENT SECURITY INDUSTRY DUDLINES

Summary of report details including date, report number, diamond type, measurements, and grading results.