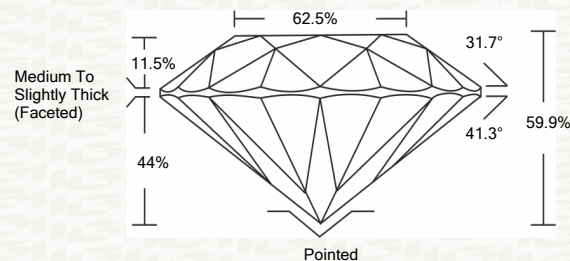




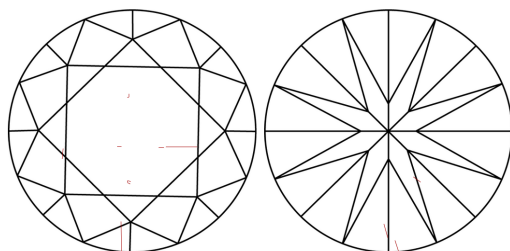
IGI GEMOLOGICAL REPORT

ADDITIONAL INFORMATION

PROPORTIONS



CLARITY CHARACTERISTICS



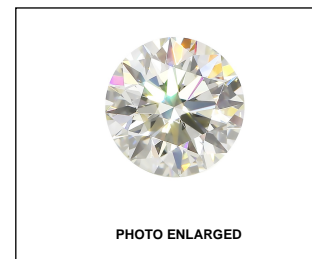
KEY TO SYMBOLS

Red symbols indicate internal characteristics. Green symbols indicate external characteristics.

GRADING SCALES

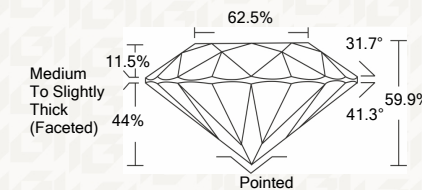
Table with 2 rows and 5 columns showing grading scales for Color (CL) and Clarity (10x) (CLARITY).

The laboratory grown diamond described in this Report (Report) has been graded, tested, analyzed, examined and/or inscribed by International Gemological Institute (IGI). A laboratory grown diamond is one that has essentially the same chemical, physical and optical properties as a mined diamond...



IGI LABORATORY GROWN DIAMOND GRADING REPORT

12/08/2020 IGI Report Number LG451055512 Shape and Cutting Style ROUND BRILLIANT Measurements 7.69 - 7.72 X 4.62 MM GRADING RESULTS Carat Weight 1.70 CARAT Color Grade I Clarity Grade SI 2 Cut Grade VERY GOOD



ADDITIONAL GRADING INFORMATION

Polish EXCELLENT Symmetry EXCELLENT Fluorescence NONE Inscription(s) LABGROWN IGI LG451055512



IGI

IGI LABORATORY GROWN DIAMOND GRADING REPORT

12/08/2020 IGI Report Number LG451055512 Shape and Cutting Style ROUND BRILLIANT Measurements 7.69 - 7.72 X 4.62 MM

GRADING RESULTS

Carat Weight 1.70 CARAT Color Grade I Clarity Grade SI 2 Cut Grade VERY GOOD

ADDITIONAL GRADING INFORMATION

Polish EXCELLENT Symmetry EXCELLENT Fluorescence NONE Inscription(s) LABGROWN IGI LG451055512



This Report is subject to the terms and conditions

© IGI 2000, edition 2019 all rights reserved.

THE DOCUMENT WAS PRODUCED THE FOLLOWING SECURITY MEASURES: SPECIAL DOCUMENT PAPER, INK SCREENS, WATERMARK, BACKGROUND DESIGNS, HOLOGRAM AND OTHER SECURITY FEATURES NOT LISTED AND DO EXCEED DOCUMENT SECURITY INDUSTRY DUDLINES

12/08/2020 IGI Report No. LG451055512 ROUND BRILLIANT 7.69 - 7.72 X 4.62 MM 1.70 CARAT I SI 2 VERY GOOD 59.9% 62.5% Medium To Slightly Thick (Faceted) Pointed EXCELLENT EXCELLENT NONE LABGROWN IGI LG451055512