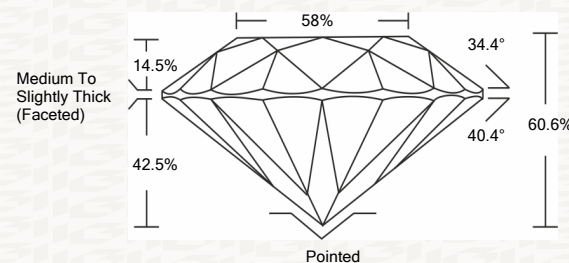




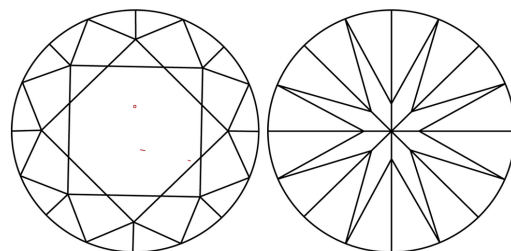
IGI GEMOLOGICAL REPORT

ADDITIONAL INFORMATION

PROPORTIONS



CLARITY CHARACTERISTICS



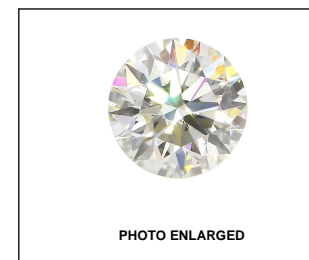
KEY TO SYMBOLS

Red symbols indicate internal characteristics. Green symbols indicate external characteristics.

GRADING SCALES

Table with 2 rows and 5 columns showing grading scales for Color and Clarity.

The laboratory grown diamond described in this Report (Report) has been graded, tested, analyzed, examined and/or inscribed by International Gemological Institute (I.G.I.).

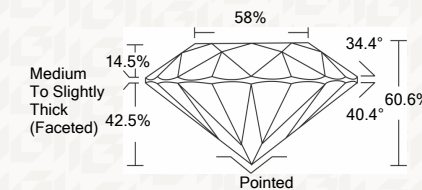


IGI LABORATORY GROWN DIAMOND GRADING REPORT

12/16/2020 IGI Report Number LG451055571 Shape and Cutting Style ROUND BRILLIANT Measurements 8.17 - 8.21 X 4.97 MM

GRADING RESULTS

Carat Weight 2.05 CARATS Color Grade J Clarity Grade VS 2 Cut Grade IDEAL



ADDITIONAL GRADING INFORMATION

Polish EXCELLENT Symmetry EXCELLENT Fluorescence NONE Inscription(s) LABGROWN IGI LG451055571



IGI

IGI LABORATORY GROWN DIAMOND GRADING REPORT

12/16/2020 IGI Report Number LG451055571 Shape and Cutting Style ROUND BRILLIANT Measurements 8.17 - 8.21 X 4.97 MM

GRADING RESULTS

Carat Weight 2.05 CARATS Color Grade J Clarity Grade VS 2 Cut Grade IDEAL

ADDITIONAL GRADING INFORMATION

Polish EXCELLENT Symmetry EXCELLENT Fluorescence NONE Inscription(s) LABGROWN IGI LG451055571



This Report is subject to the terms and conditions

© IGI 2000, edition 2019 all rights reserved.

THE DOCUMENT WAS PRODUCED THE FOLLOWING SECURITY MEASURES: SPECIAL DOCUMENT PAPER, INK SCREENS, WATERMARK, BACKGROUND DESIGNS HOLOGRAM AND OTHER SECURITY FEATURES NOT LISTED AND DO EXCEED DOCUMENT SECURITY INDUSTRY DUDLINES

12/16/2020 IGI Report No. LG451055571 ROUND BRILLIANT 8.17 - 8.21 X 4.97 MM 2.05 CARATS J VS 2 IDEAL 80.6% 58% Medium To Slightly Thick (Faceted) Pointed EXCELLENT EXCELLENT NONE LABGROWN IGI LG451055571