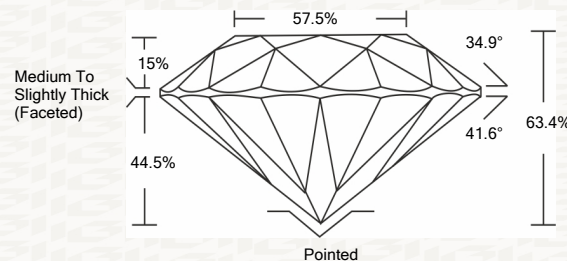




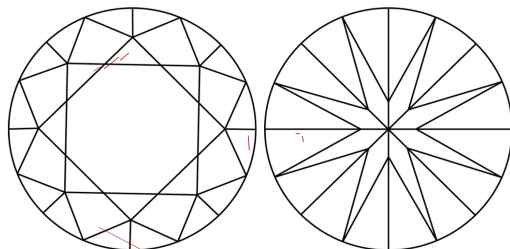
IGI GEMOLOGICAL REPORT

ADDITIONAL INFORMATION

PROPORTIONS



CLARITY CHARACTERISTICS



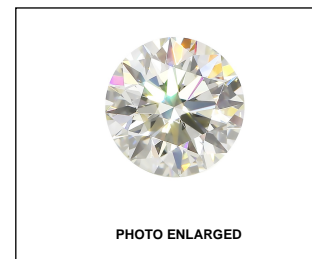
KEY TO SYMBOLS

Red symbols indicate internal characteristics. Green symbols indicate external characteristics.

GRADING SCALES

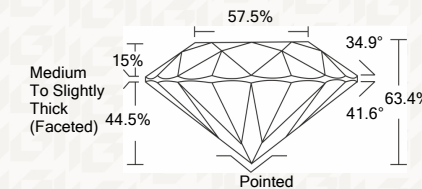
Table with 2 rows and 5 columns showing grading scales for Color and Clarity.

The laboratory grown diamond described in this Report (Report) has been graded, tested, analyzed, examined and/or inscribed by International Gemological Institute (I.G.I.).



IGI LABORATORY GROWN DIAMOND GRADING REPORT

12/16/2020 IGI Report Number LG451055603 Shape and Cutting Style ROUND BRILLIANT Measurements 6.44 - 6.47 X 4.09 MM GRADING RESULTS Carat Weight 1.05 CARAT Color Grade I Clarity Grade SI 2 Cut Grade EXCELLENT



ADDITIONAL GRADING INFORMATION

Polish EXCELLENT Symmetry EXCELLENT Fluorescence NONE Inscription(s) LABGROWN IGI LG451055603



IGI

IGI LABORATORY GROWN DIAMOND GRADING REPORT

12/16/2020 IGI Report Number LG451055603 Shape and Cutting Style ROUND BRILLIANT Measurements 6.44 - 6.47 X 4.09 MM

GRADING RESULTS

Carat Weight 1.05 CARAT Color Grade I Clarity Grade SI 2 Cut Grade EXCELLENT

ADDITIONAL GRADING INFORMATION

Polish EXCELLENT Symmetry EXCELLENT Fluorescence NONE Inscription(s) LABGROWN IGI LG451055603



This Report is subject to the terms and conditions

© IGI 2000, edition 2019 all rights reserved.

THE DOCUMENT WAS PRODUCED THE FOLLOWING SECURITY MEASURES: SPECIAL DOCUMENT PAPER, INK SCREENS, WATERMARK, BACKGROUND DESIGNS, HOLOGRAM AND OTHER SECURITY FEATURES NOT LISTED AND DO EXCEED DOCUMENT SECURITY INDUSTRY DUDLINES

12/16/2020 IGI Report No. LG451055603 ROUND BRILLIANT 6.44 - 6.47 X 4.09 MM 1.05 CARAT I SI 2 EXCELLENT 63.4% 57.5% Medium To Slightly Thick (Faceted) Pointed EXCELLENT EXCELLENT NONE LABGROWN IGI LG451055603