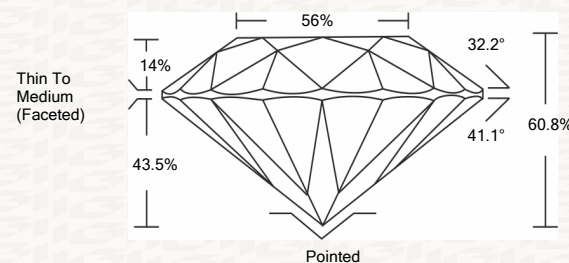




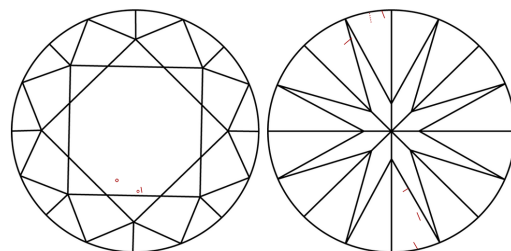
IGI GEMOLOGICAL REPORT

ADDITIONAL INFORMATION

PROPORTIONS



CLARITY CHARACTERISTICS



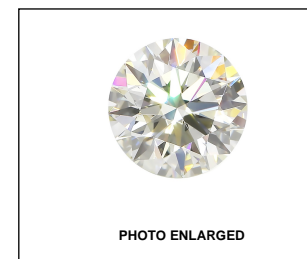
KEY TO SYMBOLS

Red symbols indicate internal characteristics. Green symbols indicate external characteristics.

GRADING SCALES

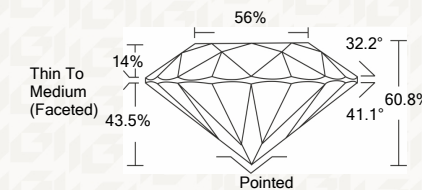
Table with 2 columns: COLOR GRADING SCALE (CL, NC, FT, VLT, LT) and CLARITY (10x) GRADING SCALE (FL, IF, VVS, VS, SI, I).

The laboratory grown diamond described in this Report (Report) has been graded, tested, analyzed, examined and/or inscribed by International Gemological Institute (I.G.I.).



IGI LABORATORY GROWN DIAMOND GRADING REPORT

12/16/2020 IGI Report Number LG451055654 Shape and Cutting Style ROUND BRILLIANT Measurements 7.11 - 7.14 X 4.32 MM GRADING RESULTS Carat Weight 1.31 CARAT Color Grade I Clarity Grade SI 1 Cut Grade EXCELLENT



ADDITIONAL GRADING INFORMATION

Polish EXCELLENT Symmetry EXCELLENT Fluorescence NONE Inscription(s) LABGROWN IGI LG451055654



IGI

This Report is subject to the terms and conditions

© IGI 2000, edition 2019 all rights reserved.

THE DOCUMENT WAS PRODUCED THE FOLLOWING SECURITY MEASURES: SPECIAL DOCUMENT PAPER, INK SCREENS, WATERMARK, BACKGROUND DESIGNS, HOLOGRAM AND OTHER SECURITY FEATURES NOT LISTED AND DO EXCEED DOCUMENT SECURITY INDUSTRY DUDLINES

12/16/2020 IGI Report No. LG451055654 ROUND BRILLIANT 7.11 - 7.14 X 4.32 MM 1.31 CARAT I SI 1 EXCELLENT 80.8% 56% Thin To Medium (Faceted) Pointed EXCELLENT EXCELLENT NONE LABGROWN IGI LG451055654