



IGI GEMOLOGICAL REPORT

IGI LABORATORY GROWN DIAMOND GRADING REPORT

12/17/2020
IGI Report Number LG451056289
Shape and Cutting Style ROUND BRILLIANT
Measurements 7.43 - 7.46 X 4.65 MM

GRADING RESULTS

Carat Weight 1.57 CARAT
Color Grade K
Clarity Grade SI 1
Cut Grade EXCELLENT

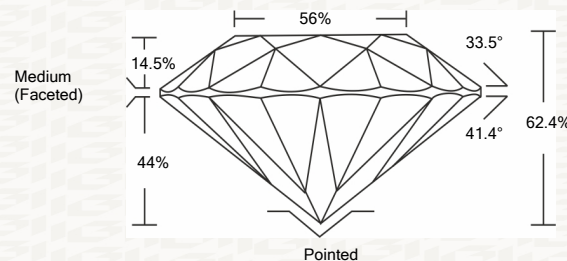
ADDITIONAL GRADING INFORMATION

Polish EXCELLENT
Symmetry EXCELLENT
Fluorescence NONE
Inscription(s) LABGROWN IGI LG451056289
Comments:Faint Brown

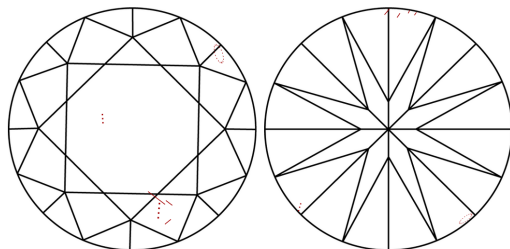


ADDITIONAL INFORMATION

PROPORTIONS



CLARITY CHARACTERISTICS



KEY TO SYMBOLS

Red symbols indicate internal characteristics.
Green symbols indicate external characteristics.

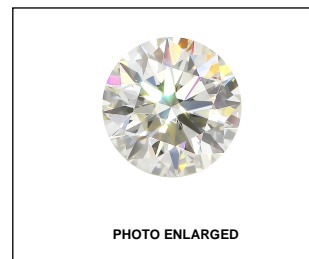
This Report is subject to the terms and conditions

© IGI 2000, edition 2019 all rights reserved.

GRADING SCALES

Table with 2 rows and 5 columns: COLOR GRADING SCALE (CL, NC, FT, VLT, LT) and CLARITY (10x) GRADING SCALE (FL, IF, VVS, VS, SI, I).

The laboratory grown diamond described in this Report (Report) has been graded, tested, analyzed, examined and/or inscribed by International Gemological Institute (I.G.I.).



LASERSCRIBE SM



IGI LABORATORY GROWN DIAMOND GRADING REPORT

12/17/2020
IGI Report Number LG451056289
Shape and Cutting Style ROUND BRILLIANT
Measurements 7.43 - 7.46 X 4.65 MM

GRADING RESULTS

Carat Weight 1.57 CARAT
Color Grade K
Clarity Grade SI 1
Cut Grade EXCELLENT

ADDITIONAL GRADING INFORMATION

Polish EXCELLENT
Symmetry EXCELLENT
Fluorescence NONE
Inscription(s) LABGROWN IGI LG451056289

Comments: Faint Brown

Summary of report details including IGI logo, report number, measurements, and grading results.