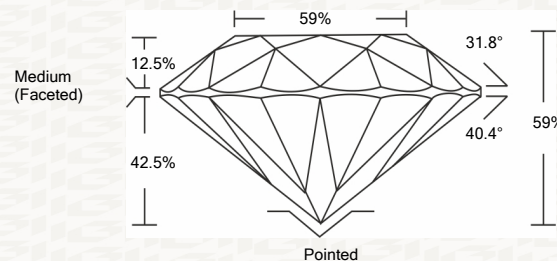




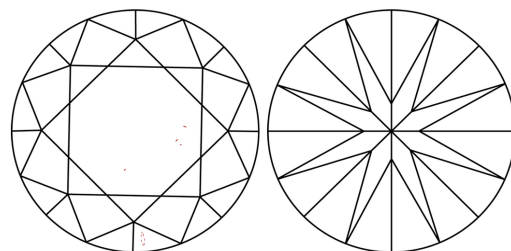
IGI GEMOLOGICAL REPORT

ADDITIONAL INFORMATION

PROPORTIONS



CLARITY CHARACTERISTICS



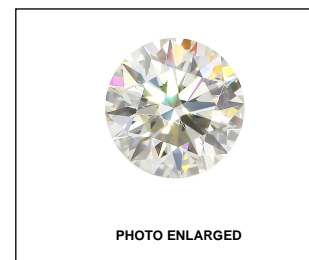
KEY TO SYMBOLS

Red symbols indicate internal characteristics. Green symbols indicate external characteristics.

GRADING SCALES

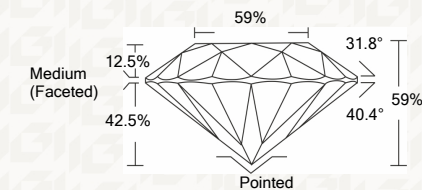
Table with 2 rows and 5 columns: COLOR GRADING SCALE (CL, NC, FT, VLT, LT) and CLARITY (10x) GRADING SCALE (FL, IF, VVS, VS, SI, I).

The laboratory grown diamond described in this Report (Report) has been graded, tested, analyzed, examined and/or inscribed by International Gemological Institute (I.G.I.).



IGI LABORATORY GROWN DIAMOND GRADING REPORT

12/17/2020 IGI Report Number LG451057005 Shape and Cutting Style ROUND BRILLIANT Measurements 7.14 - 7.15 X 4.22 MM GRADING RESULTS Carat Weight 1.32 CARAT Color Grade K Clarity Grade VS 1 Cut Grade EXCELLENT



ADDITIONAL GRADING INFORMATION

Polish EXCELLENT Symmetry EXCELLENT Fluorescence NONE Inscription(s) LABGROWN IGI LG451057005

Comments: Faint Brown

IGI LABORATORY GROWN DIAMOND GRADING REPORT

12/17/2020 IGI Report Number LG451057005 Shape and Cutting Style ROUND BRILLIANT Measurements 7.14 - 7.15 X 4.22 MM

GRADING RESULTS

Carat Weight 1.32 CARAT Color Grade K Clarity Grade VS 1 Cut Grade EXCELLENT

ADDITIONAL GRADING INFORMATION

Polish EXCELLENT Symmetry EXCELLENT Fluorescence NONE Inscription(s) LABGROWN IGI LG451057005 Comments:Faint Brown



This Report is subject to the terms and conditions

© IGI 2000, edition 2019 all rights reserved.



IGI

12/17/2020 IGI Report No LG451057005 ROUND BRILLIANT 7.14 - 7.15 X 4.22 MM Carat Weight 1.32 CARAT Color Grade K Clarity Grade VS 1 Cut Grade EXCELLENT Depth 59% Table 59% Grade Medium (Faceted) Culet Pointed Polish EXCELLENT Symmetry EXCELLENT Fluorescence NONE Inscription(s) LABGROWN IGI LG451057005 Comments: Faint Brown