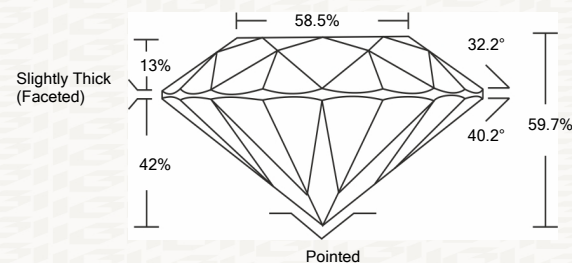




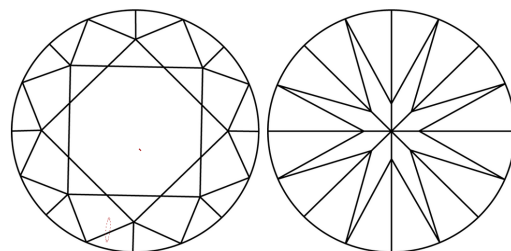
IGI GEMOLOGICAL REPORT

ADDITIONAL INFORMATION

PROPORTIONS



CLARITY CHARACTERISTICS



KEY TO SYMBOLS

Red symbols indicate internal characteristics. Green symbols indicate external characteristics.



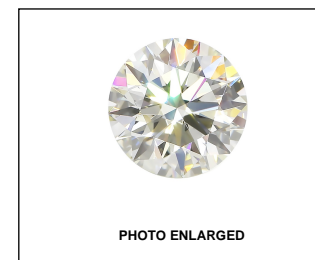
This Report is subject to the terms and conditions

© IGI 2000, edition 2019 all rights reserved.

GRADING SCALES

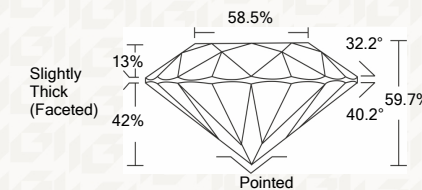
Table with 2 columns: COLOR GRADING SCALE and CLARITY (10x) GRADING SCALE. Rows include CL, NC, FT, VLT, LT and FL, IF, VVS, VS, SI, I.

The laboratory grown diamond described in this Report (Report) has been graded, tested, analyzed, examined and/or inscribed by International Gemological Institute (IGI). A laboratory grown diamond is one that has essentially the same chemical, physical and optical properties as a mined diamond...



IGI LABORATORY GROWN DIAMOND GRADING REPORT

12/17/2020 IGI Report Number LG451057019 Shape and Cutting Style ROUND BRILLIANT Measurements 8.20 - 8.21 X 4.90 MM GRADING RESULTS Carat Weight 2.03 CARATS Color Grade K Clarity Grade VS 1 Cut Grade EXCELLENT



ADDITIONAL GRADING INFORMATION

Polish EXCELLENT Symmetry EXCELLENT Fluorescence NONE Inscription(s) LABGROWN IGI LG451057019

Comments: Faint Brown



IGI

12/17/2020 IGI Report No. LG451057019 ROUND BRILLIANT 8.20 - 8.21 X 4.90 MM Carat Weight 2.03 CARATS Color Grade K Clarity Grade VS 1 Cut Grade EXCELLENT Depth 59.7% Table 58.5% Girdle Slightly Thick (Faceted) Culet Pointed Polish EXCELLENT Symmetry EXCELLENT Fluorescence NONE Inscription(s) LABGROWN IGI LG451057019 Comments: Faint Brown