



**INTERNATIONAL  
GEMOLOGICAL  
INSTITUTE**

**ELECTRONIC COPY**

**LABORATORY GROWN DIAMOND REPORT**

**LG451057227**

**IGI LABORATORY GROWN  
DIAMOND ID REPORT**

12/02/2020

IGI Report Number **LG451057227**

**ROUND BRILLIANT  
5.41 - 5.46 X 3.32 MM**

Carat Weight	0.60 CARAT
Color Grade	I
Clarity Grade	VS 1
Cut Grade	EXCELLENT
Polish	EXCELLENT
Symmetry	EXCELLENT
Fluorescence	NONE
Inscription(s)	LABGROWN IGI LG451057227

IGI GEMOLOGICAL REPORT

**IGI LABORATORY GROWN DIAMOND IDENTIFICATION REPORT**

12/02/2020

IGI Report Number **LG451057227**

Shape and Cutting Style **ROUND BRILLIANT**

Measurements **5.41 - 5.46 X 3.32 MM**

**GRADING RESULTS**

Carat Weight **0.60 CARAT**

Color Grade **I**

Clarity Grade **VS 1**

Cut Grade **EXCELLENT**

**ADDITIONAL GRADING INFORMATION**

Polish **EXCELLENT**

Symmetry **EXCELLENT**

Fluorescence **NONE**

Inscription(s) **LABGROWN IGI LG451057227**



This Laboratory Grown Diamond (LGD) described in this Report has been analyzed, graded and Laserscribed® by International Gemological Institute (IGI). A LGD has essentially the chemical, physical and optical properties as a mined diamond, with the exception of being man-made (a manufactured product). LGD's are typically produced by CVD (chemical vapor deposition) or by HPHT (high pressure high temperature) growth processes and may include post growth modifications to change the color. IGI utilizes the most advanced techniques and equipment currently available including, binocular microscopes, diamond color masters, non-contact-optical measuring device, a wide range analytical techniques including FTIR, UV-VIS-NIR, raman spectroscopy, and fluorescence analysis at various excitation wavelengths. This Report includes advanced security features. This Report is neither a guarantee, valuation nor appraisal and by making the report IGI does not agree to purchase or replace the article.

**INTERNATIONAL GEMOLOGICAL INSTITUTE, INC**

**ADDITIONAL INFORMATION**

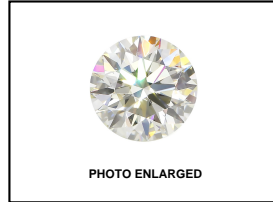
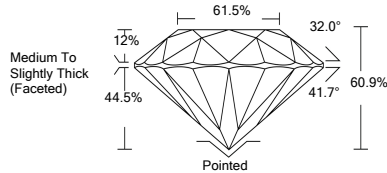


PHOTO ENLARGED



**LASERSCRIBE SM**



**IGI LABORATORY GROWN  
DIAMOND ID REPORT**

12/02/2020

IGI Report Number **LG451057227**

**ROUND BRILLIANT  
5.41 - 5.46 X 3.32 MM**

Carat Weight **0.60 CARAT**

Color Grade **I**

Clarity Grade **VS 1**

Cut Grade **EXCELLENT**

Polish **EXCELLENT**

Symmetry **EXCELLENT**

Fluorescence **NONE**

Inscription(s) **LABGROWN IGI  
LG451057227**

THE DOCUMENT WAS PRODUCED THE FOLLOWING SECURITY MEASURES: SPECIAL DOCUMENT PAPER, INK SCREENS, WATERMARK BACKGROUND DESIGNS, HOLOGRAM AND OTHER SECURITY FEATURES NOT LISTED AND DO EXCEED DOCUMENT SECURITY INDUSTRY DUDLINES

For Terms & Conditions, please visit [www.igi.org](http://www.igi.org)