



IGI GEMOLOGICAL REPORT

IGI LABORATORY GROWN DIAMOND GRADING REPORT

12/02/2020

IGI Report Number LG451057236

Shape and Cutting Style ROUND BRILLIANT

Measurements 7.62 - 7.66 X 4.59 MM

GRADING RESULTS

Carat Weight 1.63 CARAT

Color Grade K

Clarity Grade SI 2

Cut Grade EXCELLENT

ADDITIONAL GRADING INFORMATION

Polish EXCELLENT

Symmetry EXCELLENT

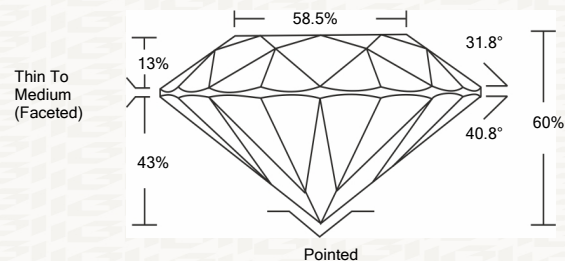
Fluorescence NONE

Inscription(s) LABGROWN IGI LG451057236

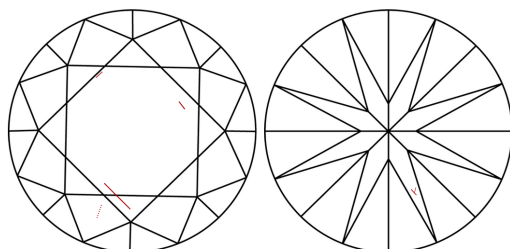


ADDITIONAL INFORMATION

PROPORTIONS



CLARITY CHARACTERISTICS



KEY TO SYMBOLS

Red symbols indicate internal characteristics. Green symbols indicate external characteristics.

This Report is subject to the terms and conditions

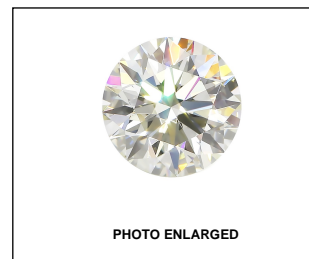
© IGI 2000, edition 2019 all rights reserved.

GRADING SCALES

Table with 2 rows and 5 columns showing grading scales for Color (CL, NC, FT, VLT, LT) and Clarity (10x) (FL, IF, VVS, VS, SI, I).

The laboratory grown diamond described in this Report (Report) has been graded, tested, analyzed, examined and/or inscribed by International Gemological Institute (I.G.I.).

© INTERNATIONAL GEMOLOGICAL INSTITUTE, INC.



IGI LABORATORY GROWN DIAMOND GRADING REPORT

12/02/2020

IGI Report Number LG451057236

Shape and Cutting Style ROUND BRILLIANT

Measurements 7.62 - 7.66 X 4.59 MM

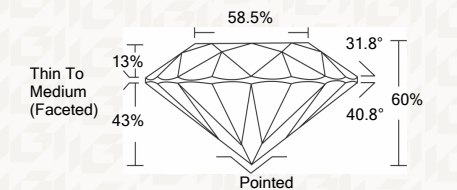
GRADING RESULTS

Carat Weight 1.63 CARAT

Color Grade K

Clarity Grade SI 2

Cut Grade EXCELLENT



ADDITIONAL GRADING INFORMATION

Polish EXCELLENT

Symmetry EXCELLENT

Fluorescence NONE

Inscription(s) LABGROWN IGI LG451057236



IGI

Summary table of report details: 12/02/2020, IGI Report No. LG451057236, ROUND BRILLIANT, 7.62 - 7.66 X 4.59 MM, 1.63 CARAT, K, SI 2, EXCELLENT, 60%, 60.5%, Thin To Medium (Faceted), Pointed, EXCELLENT, EXCELLENT, NONE, LABGROWN IGI LG451057236.