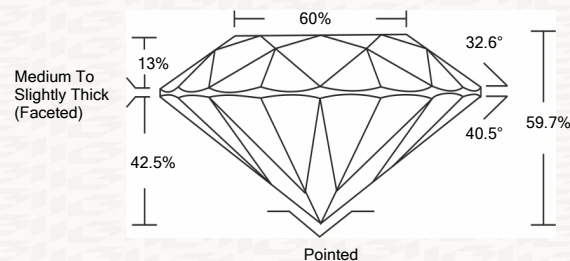




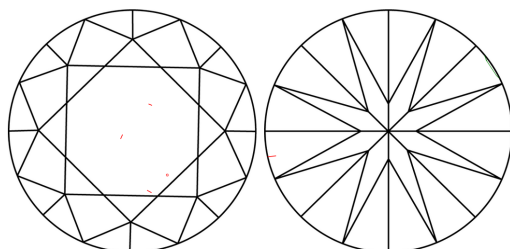
IGI GEMOLOGICAL REPORT

ADDITIONAL INFORMATION

PROPORTIONS



CLARITY CHARACTERISTICS



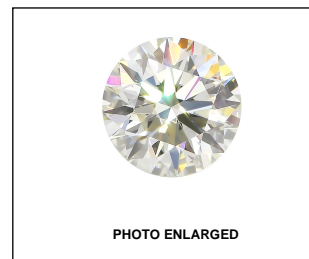
KEY TO SYMBOLS

Red symbols indicate internal characteristics. Green symbols indicate external characteristics.

GRADING SCALES

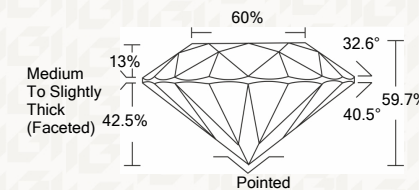
Table with 2 rows and 5 columns for Color and Clarity grading scales.

The laboratory grown diamond described in this Report (Report) has been graded, tested, analyzed, examined and/or inscribed by International Gemological Institute (I.G.I.).



IGI LABORATORY GROWN DIAMOND GRADING REPORT

12/17/2020 IGI Report Number LG451057292 Shape and Cutting Style ROUND BRILLIANT Measurements 8.14 - 8.17 X 4.87 MM GRADING RESULTS Carat Weight 2.01 CARATS Color Grade J Clarity Grade VS 1 Cut Grade EXCELLENT



ADDITIONAL GRADING INFORMATION

Polish EXCELLENT Symmetry EXCELLENT Fluorescence NONE Inscription(s) LABGROWN IGI LG451057292



IGI

IGI LABORATORY GROWN DIAMOND GRADING REPORT

12/17/2020 IGI Report Number LG451057292 Shape and Cutting Style ROUND BRILLIANT Measurements 8.14 - 8.17 X 4.87 MM

GRADING RESULTS

Carat Weight 2.01 CARATS Color Grade J Clarity Grade VS 1 Cut Grade EXCELLENT

ADDITIONAL GRADING INFORMATION

Polish EXCELLENT Symmetry EXCELLENT Fluorescence NONE Inscription(s) LABGROWN IGI LG451057292



This Report is subject to the terms and conditions

© IGI 2000, edition 2019 all rights reserved.

THE DOCUMENT WAS PRODUCED THE FOLLOWING SECURITY MEASURES: SPECIAL DOCUMENT PAPER, INK SCREENS, WATERMARK, BACKGROUND DESIGNS, HOLOGRAM AND OTHER SECURITY FEATURES NOT LISTED AND DO EXCEED DOCUMENT SECURITY INDUSTRY DUDLINES

12/17/2020 IGI Report No. LG451057292 ROUND BRILLIANT 8.14 - 8.17 X 4.87 MM 2.01 CARATS J VS 1 EXCELLENT 89.7% 80% Medium To Slightly Thick (Faceted) Pointed EXCELLENT EXCELLENT NONE LABGROWN IGI LG451057292