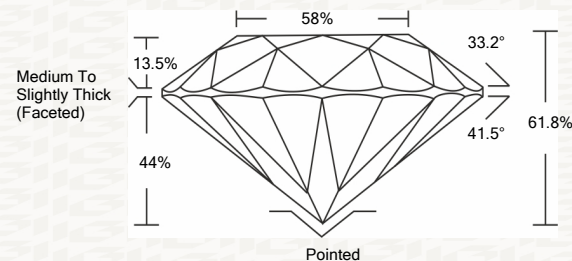




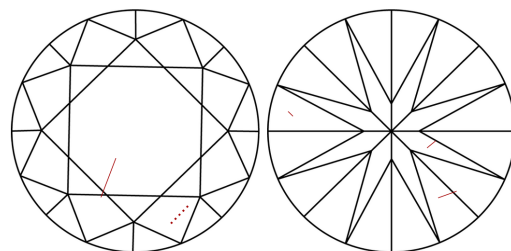
IGI GEMOLOGICAL REPORT

ADDITIONAL INFORMATION

PROPORTIONS



CLARITY CHARACTERISTICS



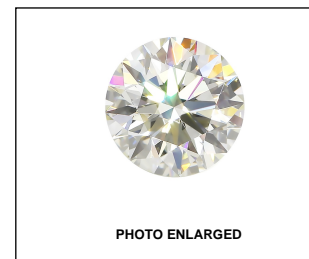
KEY TO SYMBOLS

Red symbols indicate internal characteristics. Green symbols indicate external characteristics.

GRADING SCALES

Table with 2 rows and 5 columns showing grading scales for Color and Clarity.

The laboratory grown diamond described in this Report (Report) has been graded, tested, analyzed, examined and/or inscribed by International Gemological Institute (I.G.I.).

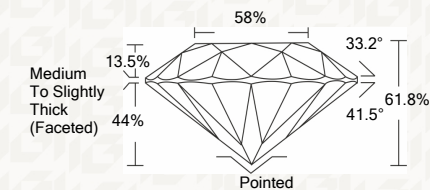


IGI LABORATORY GROWN DIAMOND GRADING REPORT

12/11/2020 IGI Report Number LG451057952 Shape and Cutting Style ROUND BRILLIANT Measurements 7.64 - 7.68 X 4.73 MM

GRADING RESULTS

Carat Weight 1.70 CARAT Color Grade J Clarity Grade SI 2 Cut Grade IDEAL



ADDITIONAL GRADING INFORMATION

Polish EXCELLENT Symmetry EXCELLENT Fluorescence NONE Inscription(s) LABGROWN IGI LG451057952

IGI LABORATORY GROWN DIAMOND GRADING REPORT

12/11/2020 IGI Report Number LG451057952 Shape and Cutting Style ROUND BRILLIANT Measurements 7.64 - 7.68 X 4.73 MM

GRADING RESULTS

Carat Weight 1.70 CARAT Color Grade J Clarity Grade SI 2 Cut Grade IDEAL

ADDITIONAL GRADING INFORMATION

Polish EXCELLENT Symmetry EXCELLENT Fluorescence NONE Inscription(s) LABGROWN IGI LG451057952



This Report is subject to the terms and conditions

© IGI 2000, edition 2019 all rights reserved.



IGI

Summary table of report details including date, report number, shape, measurements, and grading results.