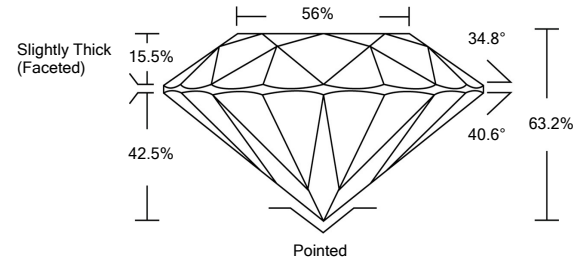




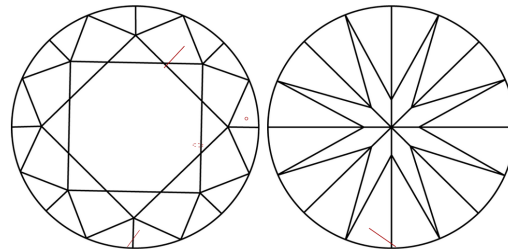
LG451058483

LABORATORY GROWN DIAMOND REPORT

PROPORTIONS



CLARITY CHARACTERISTICS



KEY TO SYMBOLS

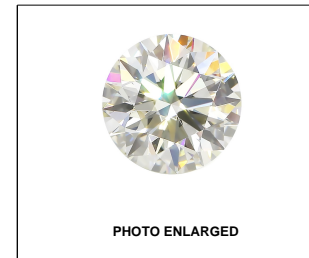
Red symbols indicate internal characteristics. Green symbols indicate external characteristics.

GRADING SCALES

Table with 5 columns for Color Grading Scale (CL to LT) and Clarity (10x) Grading Scale (FL to I).

The laboratory grown diamond described in this Report (Report) has been graded, tested, analyzed, examined and/or inscribed by International Gemological Institute (IGI). A laboratory grown diamond is one that has essentially the same chemical, physical and optical properties as a mined diamond...

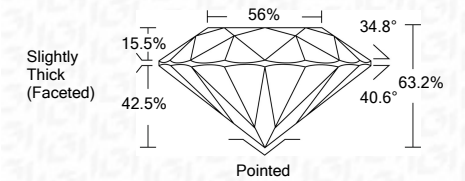
© INTERNATIONAL GEMOLOGICAL INSTITUTE, INC.



LABGROWN IGI LG451058483

LASERSCRIBE<sup>SM</sup>

12/18/2020 IGI Report Number LG451058483 Shape and Cutting Style ROUND BRILLIANT Measurements 6.29 - 6.33 x 3.99 mm GRADING RESULTS Carat Weight 1.00 CARAT Color Grade I Clarity Grade SI 1 Cut Grade EXCELLENT



ADDITIONAL GRADING INFORMATION Polish EXCELLENT Symmetry EXCELLENT Fluorescence NONE Inscription(s) LABGROWN IGI LG451058483

Comments: This Laboratory Grown Diamond was created by Chemical Vapor Deposition (CVD) process. Type IIa

12/18/2020 IGI Report Number LG451058483 Shape and Cutting Style ROUND BRILLIANT Measurements 6.29 - 6.33 x 3.99 mm

GRADING RESULTS Carat Weight 1.00 CARAT Color Grade I Clarity Grade SI 1 Cut Grade EXCELLENT

ADDITIONAL GRADING INFORMATION Polish EXCELLENT Symmetry EXCELLENT Fluorescence NONE Inscription(s) LABGROWN IGI LG451058483

Comments: This Laboratory Grown Diamond was created by Chemical Vapor Deposition (CVD) process. Type IIa



IGI

12/18/2020 IGI Report No. LG451058483 ROUND BRILLIANT 6.29 - 6.33 x 3.99 mm 1.00 CARAT I EXCELLENT 63.2% 56% Slightly Thick (Faceted) Pointed EXCELLENT EXCELLENT NONE LABGROWN IGI LG451058483 Comments: This Laboratory Grown Diamond was created by Chemical Vapor Deposition (CVD) process. Type IIa