



IGI GEMOLOGICAL REPORT

ADDITIONAL INFORMATION

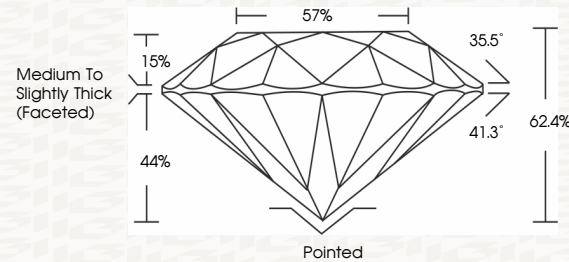
GRADING SCALES

IGI LABORATORY GROWN DIAMOND GRADING REPORT

PROPORTIONS

COLOR GRADING SCALE	CL	NC	FT	VLT	LT	
	COLORLESS D-F	NEAR COLORLESS G-J	FAINT K-M	VERY LIGHT N-R	LIGHT S-Z	
CLARITY (10x) GRADING SCALE	FL	IF	VVS	VS	SI	I
	FLAWLESS INTERNALLY FLAWLESS	VERY VERY SLIGHTLY INCLUDED	VERY SLIGHTLY INCLUDED	SLIGHTLY INCLUDED		INCLUDED

11/29/2020



The laboratory grown diamond described in this Report ("Report") has been graded, tested, analyzed, examined and/or inscribed by International Gemological Institute (IGI). A laboratory grown diamond is one that has essentially the same chemical, physical and optical properties as a mined diamond, with the exception of being grown by man (a manufactured product). IGI employs and utilizes those techniques and equipment currently available to IGI, including, without limitation, 10X magnification, corrected triplet loupe, binocular microscope, master color comparison stones, non-contact optical measuring device, Diamond Sure™, Diamond View™, Spectrophotometer and such other instruments and/or processes as deemed appropriate by IGI. This Report includes advanced security features. A duly accredited gemologist or jeweler can advise you with respect to the importance of and interrelationship between cut, color, clarity and carat weight.
THIS REPORT IS NEITHER A GUARANTEE, VALUATION, NOR APPRAISAL OF THE GEMSTONE DESCRIBED HEREIN. PLEASE REVIEW THE LIMITATIONS AND RESTRICTIONS SET FORTH ONLINE FOR ADDITIONAL INFORMATION, IMPORTANT LIMITATIONS AND DISCLAIMERS, PLEASE GO TO WWW.IGI.ORG OR CALL 1-888-BUY-IGI.

© INTERNATIONAL GEMOLOGICAL INSTITUTE, INC.

IGI LABORATORY GROWN DIAMOND GRADING REPORT

IGI Report Number **LG451068315**

11/29/2020

Shape and Cutting Style **ROUND BRILLIANT**

IGI Report Number **LG451068315**

Shape and Cutting Style **ROUND BRILLIANT**

Measurements **6.64 - 6.66 X 4.15 MM**

Measurements **6.64 - 6.66 X 4.15 MM**

GRADING RESULTS

GRADING RESULTS

Carat Weight **1.12 CARAT**

Carat Weight **1.12 CARAT**

Color Grade **H**

Color Grade **H**

Clarity Grade **VVS 1**

Clarity Grade **VVS 1**

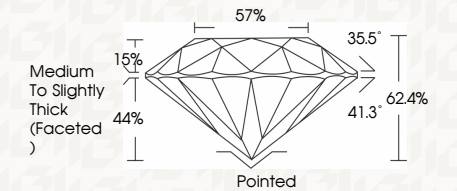
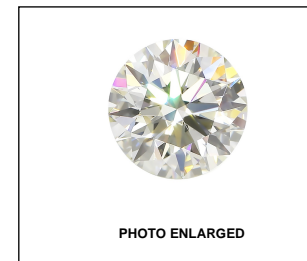
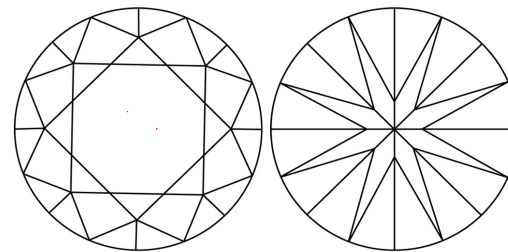
Cut Grade **IDEAL**

Cut Grade **IDEAL**

ADDITIONAL GRADING INFORMATION

CLARITY CHARACTERISTICS

Polish **EXCELLENT**



Symmetry **EXCELLENT**



ADDITIONAL GRADING INFORMATION

Fluorescence **NONE**

LASERSCRIBE SM

Polish **EXCELLENT**

Inscription(s) **LABGROWN IGI LG451068315**

Symmetry **EXCELLENT**

Comments: This Chemical Vapor Deposition (CVD) laboratory grown diamond is classified as Type IIa

Fluorescence **NONE**

Inscription(s) **LABGROWN IGI LG451068315**

Comments: This Chemical Vapor Deposition (CVD) laboratory grown diamond is classified as Type IIa

KEY TO SYMBOLS

Red symbols indicate internal characteristics.
Green symbols indicate external characteristics.



This Report is subject to the terms and conditions

© IGI 2000, edition 2019 all rights reserved.

THE DOCUMENT WAS PRODUCED WITH THE FOLLOWING SECURITY MEASURES: SPECIAL DOCUMENT PAPER, INK SCREENS, WATERMARK BACKGROUND DESIGNS HOLOGRAM AND OTHER SECURITY FEATURES NOT LISTED AND DO EXCEED DOCUMENT SECURITY INDUSTRY GUIDELINES



IGI

11/29/2020
IGI Report No LG451068315
ROUND BRILLIANT
6.64 - 6.66 X 4.15 MM
Carat Weight **1.12 CARAT**
Color Grade **H**
Clarity Grade **VVS 1**
Cut Grade **IDEAL**
Depth **62.4%**
Table **57%**
Girdle **Medium To Slightly Thick (Faceted)**
Culet **Pointed**
Polish **EXCELLENT**
Symmetry **EXCELLENT**
Fluorescence **NONE**
Inscription(s) **LABGROWN IGI LG451068315**
Comments: This Chemical Vapor Deposition (CVD) laboratory grown diamond is classified as type IIa