



IGI GEMOLOGICAL REPORT

IGI LABORATORY GROWN DIAMOND GRADING REPORT

11/29/2020
IGI Report Number LG451068316
Shape and Cutting Style ROUND BRILLIANT
Measurements 6.68 - 6.72 X 4.18 MM

GRADING RESULTS
Carat Weight 1.15 CARAT
Color Grade G
Clarity Grade VVS 1
Cut Grade IDEAL

ADDITIONAL GRADING INFORMATION

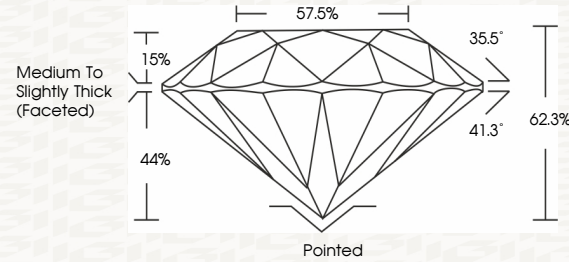
Polish EXCELLENT
Symmetry EXCELLENT
Fluorescence NONE
Inscription(s) LABGROWN IGI LG451068316

Comments: This Chemical Vapor Deposition (CVD) laboratory grown diamond is classified as Type IIa

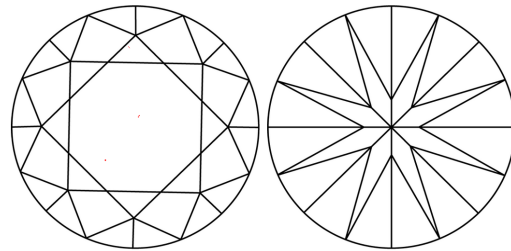


ADDITIONAL INFORMATION

PROPORTIONS



CLARITY CHARACTERISTICS



KEY TO SYMBOLS

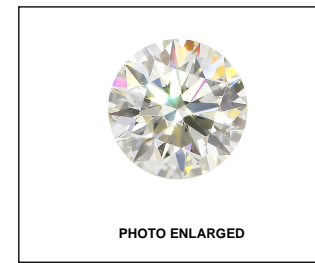
Red symbols indicate internal characteristics.
Green symbols indicate external characteristics.

This Report is subject to the terms and conditions
© IGI 2000, edition 2019 all rights reserved.

GRADING SCALES

Table with 2 rows and 5 columns: COLOR GRADING SCALE (CL, NC, FT, VLT, LT) and CLARITY (10x) GRADING SCALE (FL, IF, VVS, VS, SI, I)

The laboratory grown diamond described in this Report (Report) has been graded, tested, analyzed, examined and/or inscribed by International Gemological Institute (IGI). A laboratory grown diamond is one that has essentially the same chemical, physical and optical properties as a mined diamond, with the exception of being grown by man (a manufactured product)...



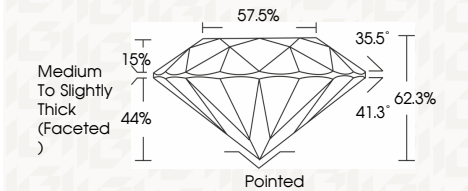
LASERSCRIBE SM



IGI LABORATORY GROWN DIAMOND GRADING REPORT

11/29/2020
IGI Report Number LG451068316
Shape and Cutting Style ROUND BRILLIANT
Measurements 6.68 - 6.72 X 4.18 MM

GRADING RESULTS
Carat Weight 1.15 CARAT
Color Grade G
Clarity Grade VVS 1
Cut Grade IDEAL



ADDITIONAL GRADING INFORMATION
Polish EXCELLENT
Symmetry EXCELLENT
Fluorescence NONE
Inscription(s) LABGROWN IGI LG451068316

Comments: This Chemical Vapor Deposition (CVD) laboratory grown diamond is classified as Type IIa



IGI

11/29/2020
IGI Report No. LG451068316
ROUND BRILLIANT
6.68 - 6.72 X 4.18 MM
Carat Weight 1.15 CARAT
Color Grade G
Clarity Grade VVS 1
Cut Grade IDEAL
Depth 62.3%
Table 57.5%
Girdle Medium To Slightly Thick (Faceted)
Culet None
Polish EXCELLENT
Symmetry EXCELLENT
Fluorescence NONE
Inscription(s) LABGROWN IGI LG451068316
Comments: This Chemical Vapor Deposition (CVD) laboratory grown diamond is classified as type IIa