



**INTERNATIONAL  
GEMOLOGICAL  
INSTITUTE**

**ELECTRONIC COPY**

**LABORATORY GROWN DIAMOND REPORT**

**LG451078881**

**IGI LABORATORY GROWN  
DIAMOND ID REPORT**

01/22/2021

IGI Report Number **LG451078881**

**OVAL BRILLIANT**

**7.47 x 5.40 x 3.43 MM**

Carat Weight 0.90 CARAT

Color Grade D

Clarity Grade SI 2

Polish EXCELLENT

Symmetry VERY GOOD

Fluorescence NONE

Inscription(s) LABGROWN IGI  
LG451078881

Comments: This Laboratory Grown Diamond was created by High Pressure High Temperature (HPHT) growth process.  
Type II

## IGI GEMOLOGICAL REPORT

### IGI LABORATORY GROWN DIAMOND IDENTIFICATION REPORT

01/22/2021

IGI Report Number LG451078881

Shape and Cutting Style OVAL BRILLIANT

Measurements 7.47 x 5.40 x 3.43 MM

### GRADING RESULTS

Carat Weight 0.90 CARAT

Color Grade D

Clarity Grade SI 2

### ADDITIONAL GRADING INFORMATION

Polish EXCELLENT

Symmetry VERY GOOD

Fluorescence NONE

Inscription(s) LABGROWN IGI LG451078881

Comments: This Laboratory Grown Diamond was created by High Pressure High Temperature (HPHT) growth process.  
Type II



This Laboratory Grown Diamond (LGD) described in this Report has been analyzed, graded and Laserscribed<sup>SM</sup> by International Gemological Institute (IGI). A LGD has essentially the chemical, physical and optical properties as a mined diamond, with the exception of being man-made (a manufactured product). LGDs are typically produced by CVD (chemical vapor deposition) or by HPHT (high pressure high temperature) growth processes and may include post growth modifications to change the color. IGI utilizes the most advanced techniques and equipment currently available including, binocular microscopes, diamond color masters, non-contact-optical measuring device, a wide range analytical techniques including FTIR, UV-VIS-NIR, raman spectroscopy, and fluorescence analysis at various excitation wavelengths. This Report includes advanced security features. This Report is neither a guarantee, valuation nor appraisal and by making the report IGI does not agree to purchase or replace the article.

INTERNATIONAL GEMOLOGICAL INSTITUTE, INC

### ADDITIONAL INFORMATION

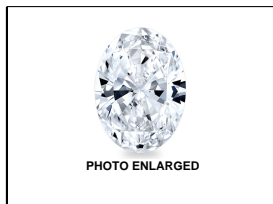
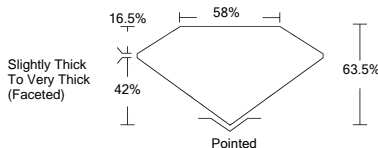


PHOTO ENLARGED



**LASERSCRIBE<sup>SM</sup>**



**IGI LABORATORY GROWN  
DIAMOND ID REPORT**

01/22/2021

IGI Report Number **LG451078881**

**OVAL BRILLIANT**

**7.47 x 5.40 x 3.43 MM**

Carat Weight 0.90 CARAT

Color Grade D

Clarity Grade SI 2

Polish EXCELLENT

Symmetry VERY GOOD

Fluorescence NONE

Inscription(s) LABGROWN IGI  
LG451078881

Comments: This Laboratory Grown Diamond was created by High Pressure High Temperature (HPHT) growth process.  
Type II

For Terms & Conditions, please visit [www.igi.org](http://www.igi.org)



THE DOCUMENT WAS PRODUCED WITH THE FOLLOWING SECURITY MEASURES: SPECIAL DOCUMENT PAPER, INK SCREENS, WATERMARK BACKGROUND DESIGNS HOLOGRAM AND OTHER SECURITY FEATURES NOT LISTED AND DO EXCEED DOCUMENT SECURITY INDUSTRY GUIDELINES