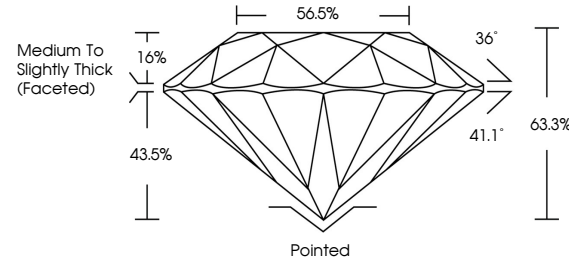




LG455008943

LABORATORY GROWN DIAMOND REPORT

PROPORTIONS



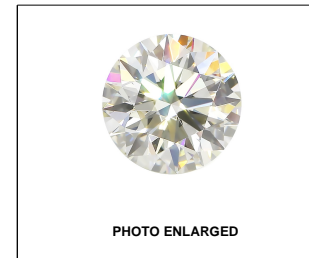
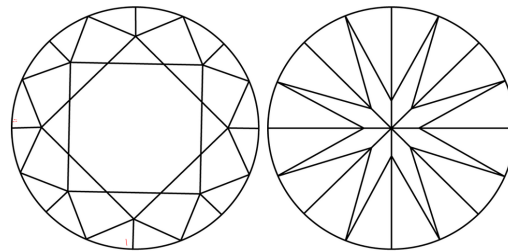
GRADING SCALES

Table with 5 columns for Color (CL, NC, FT, VLT, LT) and Clarity (FL, IF, VVS, VS, SI, I) grading scales.

The laboratory grown diamond described in this Report (Report) has been graded, tested, analyzed, examined and/or inscribed by International Gemological Institute (IGI). A laboratory grown diamond is one that has essentially the same chemical, physical and optical properties as a mined diamond...

© INTERNATIONAL GEMOLOGICAL INSTITUTE, INC.

CLARITY CHARACTERISTICS



LABGROWN IGI LG455008943

LASERSCRIBE<sup>SM</sup>

KEY TO SYMBOLS

Red symbols indicate internal characteristics. Green symbols indicate external characteristics.

01/10/2021

IGI Report Number LG455008943

Shape and Cutting Style ROUND BRILLIANT

Measurements 6.69 - 6.73 x 4.24 mm

GRADING RESULTS

Carat Weight 1.18 CARAT

Color Grade G

Clarity Grade VVS 2

Cut Grade EXCELLENT

ADDITIONAL GRADING INFORMATION

Polish EXCELLENT

Symmetry EXCELLENT

Fluorescence NONE

Inscription(s) LABGROWN IGI LG455008943

Comments: This Chemical Vapor Deposition (CVD) laboratory grown diamond is classified as Type Ila.



IGI

01/10/2021 IGI Report No. LG455008943 ROUND BRILLIANT 6.69 - 6.73 x 4.24 mm 1.18 CARAT G VVS 2 EXCELLENT 63.3% 56.5% Medium To Slightly Thick (Faceted) Pointed EXCELLENT EXCELLENT NONE LABGROWN IGI LG455008943 Comments: This Chemical Vapor Deposition (CVD) laboratory grown diamond is classified as Type Ila.

