



LG455010687

LABORATORY GROWN DIAMOND REPORT

12/29/2020
IGI Report Number LG455010687
Shape and Cutting Style ROUND BRILLIANT
Measurements 6.76 - 6.80 x 4.07 mm

GRADING RESULTS

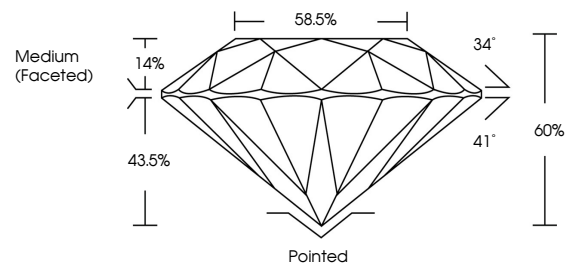
Carat Weight 1.12 CARAT
Color Grade G
Clarity Grade VVS 2
Cut Grade IDEAL

ADDITIONAL GRADING INFORMATION

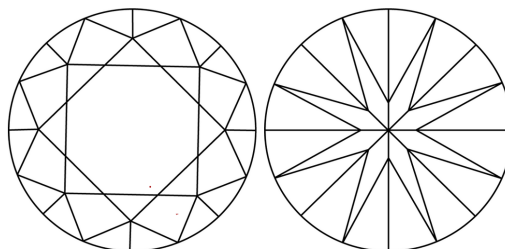
Polish EXCELLENT
Symmetry EXCELLENT
Fluorescence NONE
Inscription(s) LABGROWN IGI LG455010687

Comments: HEARTS & ARROWS
This Chemical Vapor Deposition (CVD) laboratory grown diamond is classified as Type IIa. Hearts and Arrows pattern viewable with H&A scope.

PROPORTIONS

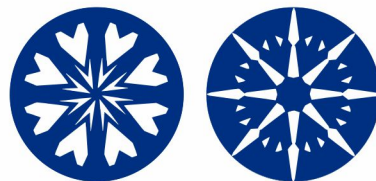


CLARITY CHARACTERISTICS



KEY TO SYMBOLS

Red symbols indicate internal characteristics.
Green symbols indicate external characteristics.

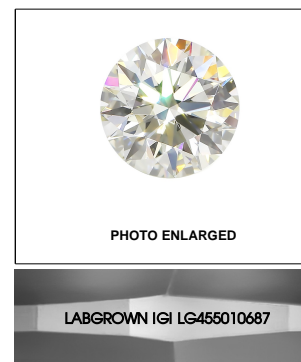


GRADING SCALES

Table with 5 columns for Color Grading Scale (CL, NC, FT, VLT, LT) and Clarity (10x) Grading Scale (FL, IF, VVS, VS, SI, I). Each column lists the corresponding color or clarity range.

The laboratory grown diamond described in this Report (Report) has been graded, tested, analyzed, examined and/or inscribed by International Gemological Institute (IGI). A laboratory grown diamond is one that has essentially the same chemical, physical and optical properties as a mined diamond, with the exception of being grown by man (a manufactured product). IGI employs and utilizes those techniques and equipment currently available to IGI, including, without limitation, 10X magnification, corrected triplet loupe, binocular microscope, master color comparison stones, non-contact-optical measuring device, Diamond Sure™, Diamond View™, Spectrophotometer and such other instruments and/or processes as deemed appropriate by IGI. This Report includes advanced security features. A duly accredited gemologist or jeweler can advise you with respect to the importance of and interrelationship between cut, color, clarity and carat weight. THIS REPORT IS NEITHER A GUARANTEE, VALUATION, NOR APPRAISAL OF THE GEMSTONE DESCRIBED HEREIN. PLEASE REVIEW THE LIMITATIONS AND RESTRICTIONS SET FORTH ONLINE. FOR ADDITIONAL INFORMATION, IMPORTANT LIMITATIONS AND DISCLAIMERS, PLEASE GO TO WWW.IGI.ORG OR CALL 1-888-BUY-IGIS.

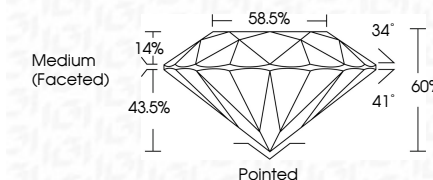
© INTERNATIONAL GEMOLOGICAL INSTITUTE, INC.



LABGROWN IGI LG455010687

LASERSCRIBE™

12/29/2020
IGI Report Number LG455010687
Shape and Cutting Style ROUND BRILLIANT
Measurements 6.76 - 6.80 x 4.07 mm
GRADING RESULTS
Carat Weight 1.12 CARAT
Color Grade G
Clarity Grade VVS 2
Cut Grade IDEAL



ADDITIONAL GRADING INFORMATION

Polish EXCELLENT
Symmetry EXCELLENT
Fluorescence NONE
Inscription(s) LABGROWN IGI LG455010687

Comments: HEARTS & ARROWS
This Chemical Vapor Deposition (CVD) laboratory grown diamond is classified as Type IIa. Hearts and Arrows pattern viewable with H&A scope.



IGI

12/29/2020
IGI Report No LG455010687
ROUND BRILLIANT
6.76 - 6.80 x 4.07 mm
Carat Weight 1.12 CARAT
Color Grade G
Clarity Grade VVS 2
Cut Grade IDEAL
Depth 60%
Table 58.5%
Girdle Medium (Faceted)
Culet Pointed
Polish EXCELLENT
Symmetry EXCELLENT
Fluorescence NONE
Inscription(s) LABGROWN IGI LG455010687
Comments: HEARTS & ARROWS
This Chemical Vapor Deposition (CVD) laboratory grown diamond is classified as Type IIa. Hearts and Arrows pattern viewable with H&A scope.