



LG455010688

LABORATORY GROWN DIAMOND REPORT

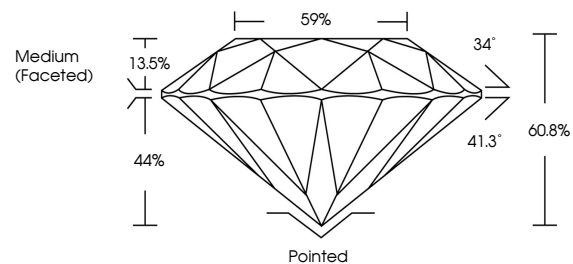
12/29/2020
IGI Report Number LG455010688
Shape and Cutting Style ROUND BRILLIANT
Measurements 6.83 - 6.86 x 4.16 mm

GRADING RESULTS
Carat Weight 1.18 CARAT
Color Grade I
Clarity Grade VS 1
Cut Grade IDEAL

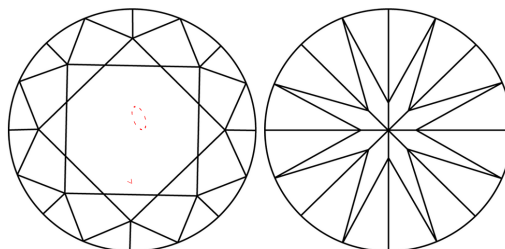
ADDITIONAL GRADING INFORMATION
Polish EXCELLENT
Symmetry EXCELLENT
Fluorescence NONE
Inscription(s) LABGROWN IGI LG455010688

Comments: HEARTS & ARROWS
This Chemical Vapor Deposition (CVD) laboratory grown diamond is classified as Type IIa. Hearts and Arrows pattern viewable with H&A scope.

PROPORTIONS

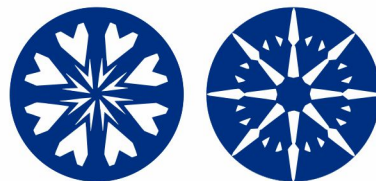


CLARITY CHARACTERISTICS



KEY TO SYMBOLS

Red symbols indicate internal characteristics.
Green symbols indicate external characteristics.

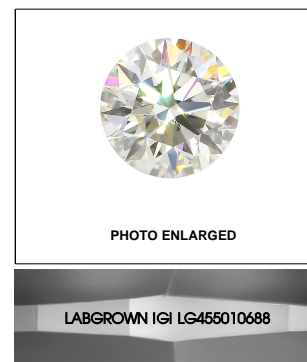


GRADING SCALES

Table with 5 columns for Color Grading Scale (CL, NC, FT, VLT, LT) and Clarity (10x) Grading Scale (FL, IF, VVS, VS, SI, I). Color scale ranges from Colorless D-F to Light S-Z. Clarity scale ranges from Flawless Internally Flawless to Included.

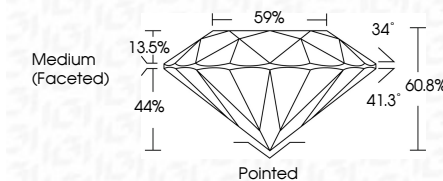
The laboratory grown diamond described in this Report (Report) has been graded, tested, analyzed, examined and/or inscribed by International Gemological Institute (IGI). A laboratory grown diamond is one that has essentially the same chemical, physical and optical properties as a mined diamond, with the exception of being grown by man (a manufactured product). IGI employs and utilizes those techniques and equipment currently available to IGI, including, without limitation, 10X magnification, corrected triplet loupe, binocular microscope, master color comparison stones, non-contact-optical measuring device, Diamond Sure™, Diamond View™, Spectrophotometer and such other instruments and/or processes as deemed appropriate by IGI. This Report includes advanced security features. A duly accredited gemologist or jeweler can advise you with respect to the importance of and interrelationship between cut, color, clarity and carat weight. THIS REPORT IS NEITHER A GUARANTEE, VALUATION, NOR APPRAISAL OF THE GEMSTONE DESCRIBED HEREIN. PLEASE REVIEW THE LIMITATIONS AND RESTRICTIONS SET FORTH ONLINE. FOR ADDITIONAL INFORMATION, IMPORTANT LIMITATIONS AND DISCLAIMERS, PLEASE GO TO WWW.IGI.ORG OR CALL 1-888-BUY-IGIS.

© INTERNATIONAL GEMOLOGICAL INSTITUTE, INC.



LASERSCRIBE™

12/29/2020
IGI Report Number LG455010688
Shape and Cutting Style ROUND BRILLIANT
Measurements 6.83 - 6.86 x 4.16 mm
GRADING RESULTS
Carat Weight 1.18 CARAT
Color Grade I
Clarity Grade VS 1
Cut Grade IDEAL



ADDITIONAL GRADING INFORMATION
Polish EXCELLENT
Symmetry EXCELLENT
Fluorescence NONE
Inscription(s) LABGROWN IGI LG455010688

Comments: HEARTS & ARROWS
This Chemical Vapor Deposition (CVD) laboratory grown diamond is classified as Type IIa. Hearts and Arrows pattern viewable with H&A scope.



IGI

12/29/2020
IGI Report No LG455010688
ROUND BRILLIANT
6.83 - 6.86 x 4.16 mm
Carat Weight 1.18 CARAT
Color Grade I
Clarity Grade VS 1
Depth 60.8%
Table 59%
Grade Medium (Faceted)
Culet Pointed
Polish EXCELLENT
Symmetry EXCELLENT
Fluorescence NONE
Inscription(s) LABGROWN IGI LG455010688
Comments: HEARTS & ARROWS
The Chemical Vapor Deposition (CVD) laboratory grown diamond is classified as Type IIa. Hearts and Arrows pattern viewable with H&A scope.