



LABORATORY GROWN DIAMOND REPORT

LG455011431

GRADING SCALES

Table with 5 columns for Color Grading Scale (CL, NC, FT, VLT, LT) and Clarity (10x) Grading Scale (FL, IF, VVS, VS, SI, I).

The laboratory grown diamond described in this Report (Report) has been graded, tested, analyzed, examined and/or inscribed by International Gemological Institute (IGI). A laboratory grown diamond is one that has essentially the same chemical, physical and optical properties as a mined diamond...

© INTERNATIONAL GEMOLOGICAL INSTITUTE, INC.

12/29/2020

IGI Report Number LG455011431

Shape and Cutting Style ROUND BRILLIANT

Measurements 6.76 - 6.78 x 4.21 mm

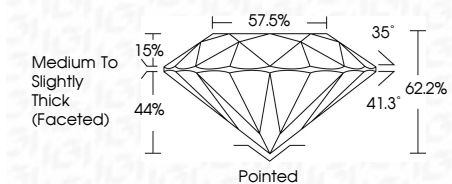
GRADING RESULTS

Carat Weight 1.18 CARAT

Color Grade H

Clarity Grade VVS 1

Cut Grade IDEAL



ADDITIONAL GRADING INFORMATION

Polish EXCELLENT

Symmetry EXCELLENT

Fluorescence NONE

Inscription(s) LABGROWN IGI LG455011431

Comments: This Chemical Vapor Deposition (CVD) laboratory grown diamond is classified as Type IIa.



IGI

12/29/2020 IGI Report No LG455011431 ROUND BRILLIANT 6.76 - 6.78 x 4.21 mm 1.18 CARAT H VVS 1 IDEAL 62.2% 57.5% Medium To Slightly Thick (Faceted) Pointed EXCELLENT EXCELLENT NONE LABGROWN IGI LG455011431

12/29/2020

IGI Report Number LG455011431

Shape and Cutting Style ROUND BRILLIANT

Measurements 6.76 - 6.78 x 4.21 mm

GRADING RESULTS

Carat Weight 1.18 CARAT

Color Grade H

Clarity Grade VVS 1

Cut Grade IDEAL

ADDITIONAL GRADING INFORMATION

Polish EXCELLENT

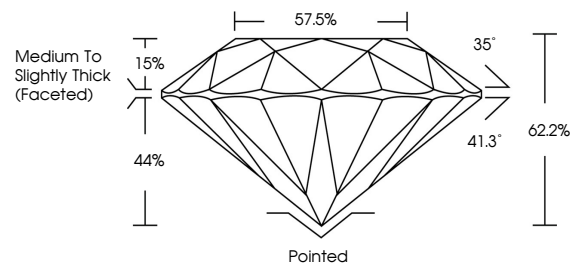
Symmetry EXCELLENT

Fluorescence NONE

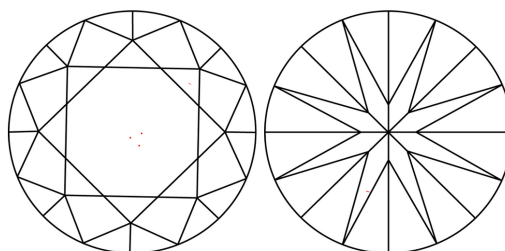
Inscription(s) LABGROWN IGI LG455011431

Comments: This Chemical Vapor Deposition (CVD) laboratory grown diamond is classified as Type IIa.

PROPORTIONS

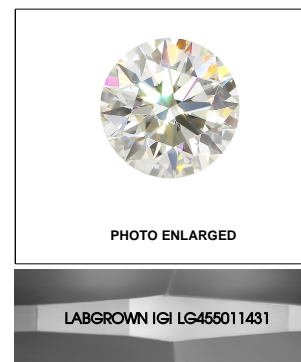


CLARITY CHARACTERISTICS



KEY TO SYMBOLS

Red symbols indicate internal characteristics. Green symbols indicate external characteristics.



LASERSCRIBE<sup>SM</sup>

