



**INTERNATIONAL
GEMOLOGICAL
INSTITUTE**

ELECTRONIC COPY

LABORATORY GROWN DIAMOND REPORT

LG455017045

**IGI LABORATORY GROWN
DIAMOND ID REPORT**

12/17/2020

IGI Report Number **LG455017045**

PEAR BRILLIANT

7.38 x 4.53 x 2.85 MM

Carat Weight	0.58 CARAT
Color Grade	D
Clarity Grade	VS 1
Polish	EXCELLENT
Symmetry	EXCELLENT
Fluorescence	NONE
Inscription(s)	LABGROWN IGI LG455017045

Comments: This Laboratory Grown Diamond was created by high pressure high temperature process (HPHT).
Type II

IGI GEMOLOGICAL REPORT

IGI LABORATORY GROWN DIAMOND IDENTIFICATION REPORT

12/17/2020
 IGI Report Number **LG455017045**
 Shape and Cutting Style **PEAR BRILLIANT**
 Measurements **7.38 x 4.53 x 2.85 MM**

GRADING RESULTS

Carat Weight **0.58 CARAT**
 Color Grade **D**
 Clarity Grade **VS 1**

ADDITIONAL GRADING INFORMATION

Polish **EXCELLENT**
 Symmetry **EXCELLENT**
 Fluorescence **NONE**
 Inscription(s) **LABGROWN IGI LG455017045**

Comments: This Laboratory Grown Diamond was created by high pressure high temperature process (HPHT).
Type II



This Laboratory Grown Diamond (LGD) described in this Report has been analyzed, graded and LaserscribedSM by International Gemological Institute (IGI). A LGD has essentially the chemical, physical and optical properties as a mined diamond, with the exception of being man-made (a manufactured product). LGD's are typically produced by CVD (chemical vapor deposition) or by HPHT (high pressure high temperature) growth processes and may include post growth modifications to change the color. IGI utilizes the most advanced techniques and equipment currently available including, binocular microscopes, diamond color masters, non-contact-optical measuring device, a wide range analytical techniques including FTIR, UV-VIS-NIR, raman spectroscopy, and fluorescence analysis at various excitation wavelengths. This Report includes advanced security features. This Report is neither a guarantee, valuation nor appraisal and by making the report IGI does not agree to purchase or replace the article.
INTERNATIONAL GEMOLOGICAL INSTITUTE, INC

ADDITIONAL INFORMATION

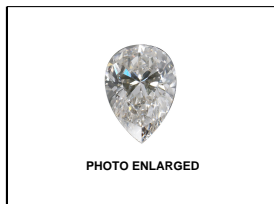
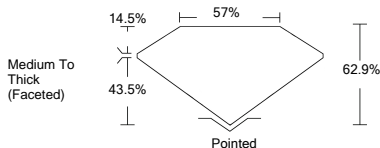


PHOTO ENLARGED



LABGROWN IGI LG455017045

LASERSCRIBESM



**IGI LABORATORY GROWN
DIAMOND ID REPORT**

12/17/2020

IGI Report Number **LG455017045**

PEAR BRILLIANT

7.38 x 4.53 x 2.85 MM

Carat Weight	0.58 CARAT
Color Grade	D
Clarity Grade	VS 1
Polish	EXCELLENT
Symmetry	EXCELLENT
Fluorescence	NONE
Inscription(s)	LABGROWN IGI LG455017045

Comments: This Laboratory Grown Diamond was created by high pressure high temperature process (HPHT).
Type II

For Terms & Conditions, please visit www.igi.org



THE DOCUMENT WAS PRODUCED WITH THE FOLLOWING SECURITY MEASURES: SPECIAL DOCUMENT PAPER, INK SCREENS, WATERMARK BACKGROUND DESIGNS HOLOGRAM AND OTHER SECURITY FEATURES NOT LISTED AND DO EXCEED DOCUMENT SECURITY INDUSTRY GUIDELINES