



LG457060978

IGI LABORATORY GROWN DIAMOND ID REPORT

12/31/2020

IGI Report Number LG457060978

ROUND BRILLIANT

6.03 - 6.06 X 3.70 MM

Carat Weight	0.82 CARAT
Color Grade	F
Clarity Grade	SI 1
Cut Grade	IDEAL
Polish	EXCELLENT
Symmetry	EXCELLENT
Fluorescence	NONE
Inscription(s)	LABGROWN IGI LG457060978

Comments: This Laboratory Grown Diamond was created by High Pressure High Temperature (HPHT) growth process. Type II

IGI GEMOLOGICAL REPORT

IGI LABORATORY GROWN DIAMOND IDENTIFICATION REPORT

12/31/2020
 IGI Report Number LG457060978
 Shape and Cutting Style ROUND BRILLIANT
 Measurements 6.03 - 6.06 X 3.70 MM

GRADING RESULTS

Carat Weight 0.82 CARAT
 Color Grade F
 Clarity Grade SI 1
 Cut Grade IDEAL

ADDITIONAL GRADING INFORMATION

Polish EXCELLENT
 Symmetry EXCELLENT
 Fluorescence NONE
 Inscription(s) LABGROWN IGI LG457060978

Comments: This Laboratory Grown Diamond was created by High Pressure High Temperature (HPHT) growth process. Type II



ADDITIONAL INFORMATION

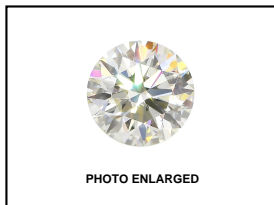
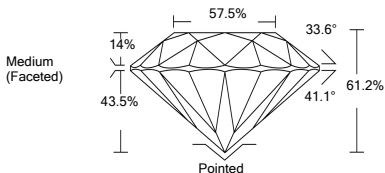


PHOTO ENLARGED



LABGROWN IGI LG457060978

LASERSCRIBE SM



IGI LABORATORY GROWN DIAMOND ID REPORT

12/31/2020

IGI Report Number LG457060978

ROUND BRILLIANT

6.03 - 6.06 X 3.70 MM

Carat Weight	0.82 CARAT
Color Grade	F
Clarity Grade	SI 1
Cut Grade	IDEAL
Polish	EXCELLENT
Symmetry	EXCELLENT
Fluorescence	NONE
Inscription(s)	LABGROWN IGI LG457060978

Comments: This Laboratory Grown Diamond was created by High Pressure High Temperature (HPHT) growth process. Type II



THE DOCUMENT WAS PRODUCED WITH THE FOLLOWING SECURITY MEASURES: SPECIAL DOCUMENT PAPER, INK SCREENS, WATERMARK BACKGROUND DESIGNS HOLOGRAM AND OTHER SECURITY FEATURES NOT LISTED AND DO EXCEED DOCUMENT SECURITY INDUSTRY GUIDELINES