



LG457060980

IGI LABORATORY GROWN DIAMOND ID REPORT

12/31/2020

IGI Report Number LG457060980

ROUND BRILLIANT

5.94 - 5.98 X 3.67 MM

Carat Weight	0.80 CARAT
Color Grade	E
Clarity Grade	SI 2
Cut Grade	IDEAL
Polish	EXCELLENT
Symmetry	EXCELLENT
Fluorescence	NONE
Inscription(s)	LABGROWN IGI LG457060980

Comments: This Laboratory Grown Diamond was created by High Pressure High Temperature (HPHT) growth process. Type II

IGI GEMOLOGICAL REPORT

IGI LABORATORY GROWN DIAMOND IDENTIFICATION REPORT

12/31/2020
 IGI Report Number LG457060980
 Shape and Cutting Style ROUND BRILLIANT
 Measurements 5.94 - 5.98 X 3.67 MM

GRADING RESULTS

Carat Weight 0.80 CARAT
 Color Grade E
 Clarity Grade SI 2
 Cut Grade IDEAL

ADDITIONAL GRADING INFORMATION

Polish EXCELLENT
 Symmetry EXCELLENT
 Fluorescence NONE
 Inscription(s) LABGROWN IGI LG457060980

Comments: This Laboratory Grown Diamond was created by High Pressure High Temperature (HPHT) growth process. Type II



ADDITIONAL INFORMATION

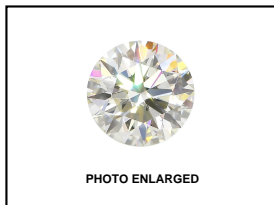
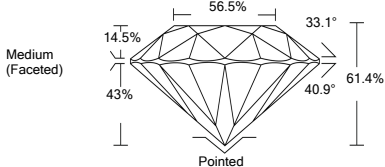


PHOTO ENLARGED



LASERSCRIBE SM



IGI LABORATORY GROWN DIAMOND ID REPORT

12/31/2020

IGI Report Number LG457060980

ROUND BRILLIANT

5.94 - 5.98 X 3.67 MM

Carat Weight	0.80 CARAT
Color Grade	E
Clarity Grade	SI 2
Cut Grade	IDEAL
Polish	EXCELLENT
Symmetry	EXCELLENT
Fluorescence	NONE
Inscription(s)	LABGROWN IGI LG457060980

Comments: This Laboratory Grown Diamond was created by High Pressure High Temperature (HPHT) growth process. Type II



THE DOCUMENT WAS PRODUCED WITH THE FOLLOWING SECURITY MEASURES: SPECIAL DOCUMENT PAPER, INK SCREENS, WATERMARK BACKGROUND DESIGNS HOLOGRAM AND OTHER SECURITY FEATURES NOT LISTED AND DO EXCEED DOCUMENT SECURITY INDUSTRY GUIDELINES