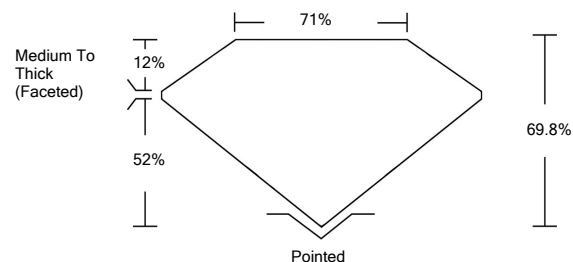




LG459100336

LABORATORY GROWN DIAMOND REPORT

PROPORTIONS

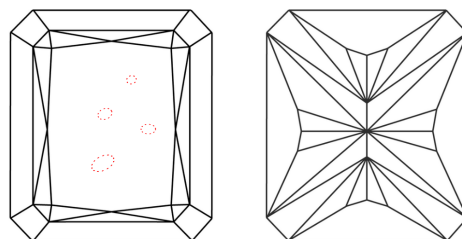


GRADING SCALES

Table with 5 columns for Color (CL, NC, FT, VLT, LT) and Clarity (FL, IF, VVS, VS, SI, I) grading scales.

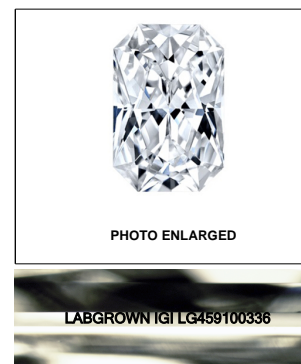
The laboratory grown diamond described in this Report (Report) has been graded, tested, analyzed, examined and/or inscribed by International Gemological Institute (IGI). A laboratory grown diamond is one that has essentially the same chemical, physical and optical properties as a mined diamond...

CLARITY CHARACTERISTICS



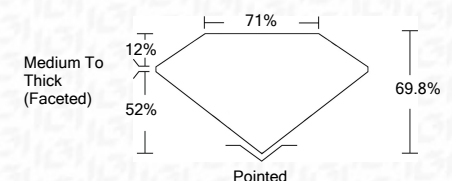
KEY TO SYMBOLS

Red symbols indicate internal characteristics. Green symbols indicate external characteristics.



LASERSCRIBE<sup>SM</sup>

01/21/2021 IGI Report Number LG459100336 Shape and Cutting Style CUT CORNERED RECTANGULAR MODIFIED BRILLIANT Measurements 7.56 x 5.67 x 3.96 mm GRADING RESULTS Carat Weight 1.51 CARAT Color Grade G Clarity Grade SI 1



ADDITIONAL GRADING INFORMATION

Polish EXCELLENT Symmetry VERY GOOD Fluorescence NONE Inscription(s) LABGROWN IGI LG459100336

Comments: This Laboratory Grown Diamond was created by Chemical Vapor Deposition (CVD) growth process and may include post-growth treatment. Type IIa

01/21/2021 IGI Report Number LG459100336 Shape and Cutting Style CUT CORNERED RECTANGULAR MODIFIED BRILLIANT Measurements 7.56 x 5.67 x 3.96 mm

GRADING RESULTS

Carat Weight 1.51 CARAT Color Grade G Clarity Grade SI 1

ADDITIONAL GRADING INFORMATION

Polish EXCELLENT Symmetry VERY GOOD Fluorescence NONE

Inscription(s) LABGROWN IGI LG459100336

Comments: This Laboratory Grown Diamond was created by Chemical Vapor Deposition (CVD) growth process and may include post-growth treatment. Type IIa



IGI

01/21/2021 IGI Report No. LG459100336 CUT CORNERED RECT. MODIFIED BRILLIANT 7.56 x 5.67 x 3.96 mm 1.51 CARAT G 69.8% 71% Medium To Thick (Faceted) Pointed EXCELLENT VERY GOOD NONE LABGROWN IGI LG459100336

This Laboratory Grown Diamond was created by Chemical Vapor Deposition (CVD) growth process and may include post-growth treatment. Type IIa