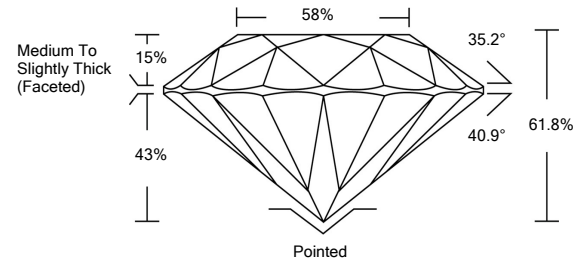




LG459101227

LABORATORY GROWN DIAMOND REPORT

PROPORTIONS



GRADING SCALES

COLOR GRADING SCALE	CL	NC	FT	VL	LT
	COLORLESS D-F	NEAR COLORLESS G-J	FAINT K-M	VERY LIGHT N-R	LIGHT S-Z
CLARITY (10X) GRADING SCALE	FL	VVS	VS	SI	I
	FLAWLESS INTERNALLY FLAWLESS	VERY VERY SLIGHTLY INCLUDED	VERY SLIGHTLY INCLUDED	SLIGHTLY INCLUDED	INCLUDED

The laboratory grown diamond described in this Report (Report) has been graded, tested, analyzed, examined and/or inscribed by International Gemological Institute (IGI). A laboratory grown diamond is one that has essentially the same chemical, physical and optical properties as a mined diamond, with the exception of being grown by man (a manufactured product). IGI employs and utilizes those techniques and equipment currently available to IGI, including, without limitation, 10X magnification, corrected triplet loupe, binocular microscope, master color comparison stones, non-contact-optical measuring device, Diamond Sure™, Diamond View™, Spectrophotometer and such other instruments and/or processes as deemed appropriate by IGI. This Report includes advanced security features. A duly accredited gemologist or jeweler can advise you with respect to the importance of and interrelationship between cut, color, clarity and carat weight. THIS REPORT IS NEITHER A GUARANTEE, VALUATION, NOR APPRAISAL OF THE GEMSTONE DESCRIBED HEREIN. PLEASE REVIEW THE LIMITATIONS AND RESTRICTIONS SET FORTH ONLINE. FOR ADDITIONAL INFORMATION, IMPORTANT LIMITATIONS AND DISCLAIMERS, PLEASE GO TO WWW.IGI.ORG OR CALL 1-888-BUY-IGIS.

© INTERNATIONAL GEMOLOGICAL INSTITUTE, INC.

12/31/2020

IGI Report Number LG459101227

Shape and Cutting Style ROUND BRILLIANT

Measurements 8.65 - 8.71 x 5.37 mm

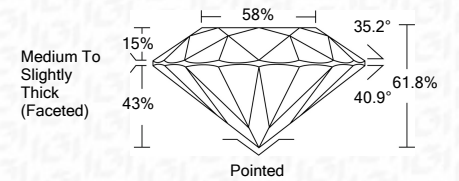
GRADING RESULTS

Carat Weight 2.51 CARATS

Color Grade H

Clarity Grade SI 1

Cut Grade IDEAL



ADDITIONAL GRADING INFORMATION

Polish EXCELLENT

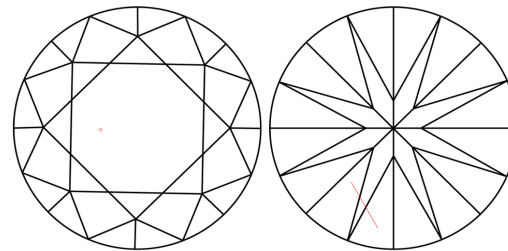
Symmetry EXCELLENT

Fluorescence NONE

Inscription(s) LABGROWN IGI LG459101227

Comments: This Laboratory Grown Diamond was created by Chemical Vapor Deposition (CVD) process. Type IIa

CLARITY CHARACTERISTICS



KEY TO SYMBOLS

Red symbols indicate internal characteristics. Green symbols indicate external characteristics.

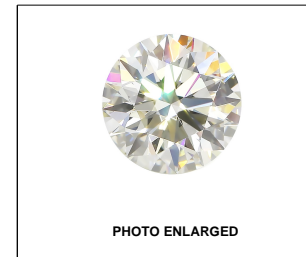


PHOTO ENLARGED



LASERSCRIBESM



THIS DOCUMENT WAS PRODUCED WITH THE FOLLOWING SECURITY MEASURES: SPECIAL DOCUMENT PAPER, INK SCREENS, WATERMARK BACKGROUND DESIGNS, HOLOGRAM AND OTHER SECURITY FEATURES NOT LISTED AND DO EXCEED DOCUMENT SECURITY INDUSTRY GUIDELINES.



IGI

12/31/2020 IGI Report No. LG459101227
ROUND BRILLIANT
 8.65 - 8.71 x 5.37 mm
 Carat Weight 2.51 CARATS
 Color Grade H
 Clarity Grade SI 1
 Depth 61.8%
 Table 58%
 Girdle Medium To Slightly Thick (Faceted)
 Culet Pointed
 Polish EXCELLENT
 Symmetry EXCELLENT
 Fluorescence NONE
 Inscription(s) LABGROWN IGI LG459101227
 Comments: Laboratory Grown Diamond was created by Chemical Vapor Deposition (CVD) process. Type IIa

