



LABORATORY GROWN DIAMOND REPORT

LG459120488

GRADING SCALES

Table with 5 columns for Color Grading Scale (CL, NC, FT, VLT, LT) and Clarity (10x) Grading Scale (FL, IF, VVS, VS, SI, I).

The laboratory grown diamond described in this Report (Report) has been graded, tested, analyzed, examined and/or inscribed by International Gemological Institute (IGI). A laboratory grown diamond is one that has essentially the same chemical, physical and optical properties as a mined diamond...

01/27/2021 IGI Report Number LG459120488 Shape and Cutting Style PEAR BRILLIANT Measurements 12.40 x 8.34 x 4.92 mm

GRADING RESULTS Carat Weight 3.02 CARATS Color Grade E Clarity Grade SI 1

01/27/2021 IGI Report Number LG459120488 Shape and Cutting Style PEAR BRILLIANT Measurements 12.40 x 8.34 x 4.92 mm

GRADING RESULTS

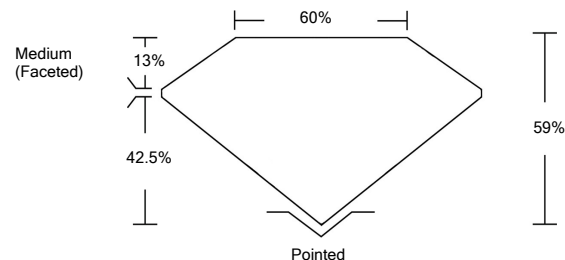
Carat Weight 3.02 CARATS Color Grade E Clarity Grade SI 1

ADDITIONAL GRADING INFORMATION

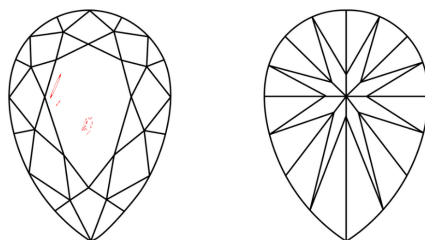
Polish EXCELLENT Symmetry EXCELLENT Fluorescence NONE Inscription(s) LABGROWN IGI LG459120488

Comments: As Grown - No indication of post-growth treatment. This Laboratory Grown Diamond was created by High Pressure High Temperature (HPHT) growth process. Type II

PROPORTIONS

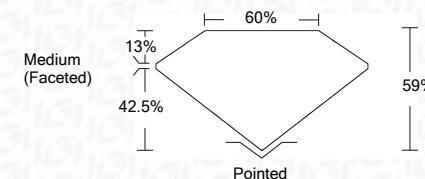
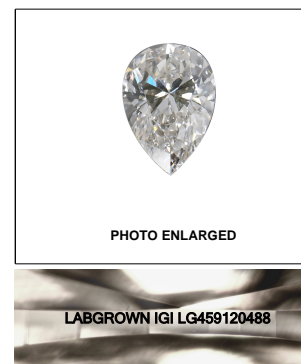


CLARITY CHARACTERISTICS



KEY TO SYMBOLS

Red symbols indicate internal characteristics. Green symbols indicate external characteristics.



ADDITIONAL GRADING INFORMATION

Polish EXCELLENT Symmetry EXCELLENT Fluorescence NONE Inscription(s) LABGROWN IGI LG459120488

Comments: As Grown - No indication of post-growth treatment. This Laboratory Grown Diamond was created by High Pressure High Temperature (HPHT) growth process. Type II



01/27/2021 IGI Report No. LG459120488 PEAR BRILLIANT 12.40 x 8.34 x 4.92 mm 3.02 CARATS E SI 1 59% 60% Medium (Faceted) Pointed EXCELLENT EXCELLENT NONE LABGROWN IGI LG459120488