



# INTERNATIONAL GEMOLOGICAL INSTITUTE

## LABORATORY GROWN DIAMOND REPORT

### IGI LABORATORY GROWN DIAMOND IDENTIFICATION REPORT

05/28/2021  
 IGI Report Number LG459129561  
 Shape and Cutting Style ROUND BRILLIANT  
 Measurements 4.28 - 4.29 X 2.64 MM

### GRADING RESULTS

Carat Weight 0.30 CARAT  
 Color Grade F  
 Clarity Grade SI 1  
 Cut Grade EXCELLENT

### ADDITIONAL GRADING INFORMATION

Polish VERY GOOD  
 Symmetry VERY GOOD  
 Fluorescence NONE  
 Inscription(s) LABGROWN IGI LG459129561

### Comments: HEARTS & ARROWS

As Grown - No indication of post-growth treatment.  
 This Laboratory Grown Diamond was created by High Pressure High Temperature (HPHT) growth process.  
 Type II

This Laboratory Grown Diamond (LGD) described in this Report has been analyzed, graded and Laserscribed® by International Gemological Institute (IGI). A LGD has essentially the chemical, physical and optical properties as a mined diamond, with the exception of being man-made (a manufactured product). LGD's are typically produced by CVD (chemical vapor deposition) or by HPHT (high pressure high temperature) growth processes and may include post growth modifications to change the color. IGI utilizes the most advanced techniques and equipment currently available including, binocular microscopes, diamond color masters, non-contact-optical measuring device, a wide range analytical techniques including FTIR, UV-VIS-NIR, raman spectroscopy, and fluorescence analysis at various excitation wavelengths. This Report includes advanced security features. This Report is neither a guarantee, valuation nor appraisal and by making the report IGI does not agree to purchase or replace the article.

INTERNATIONAL GEMOLOGICAL INSTITUTE, INC

ELECTRONIC COPY

## LABORATORY GROWN DIAMOND REPORT

LG459129561

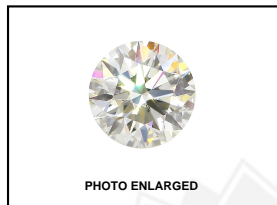
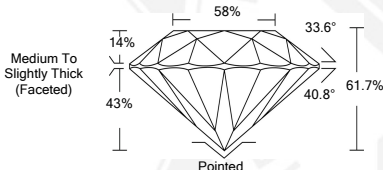


PHOTO ENLARGED



LASERSCRIBE<sup>SM</sup>



### IGI LABORATORY GROWN DIAMOND ID REPORT

05/28/2021  
 IGI Report Number LG459129561  
 ROUND BRILLIANT  
 4.28 - 4.29 X 2.64 MM  
 Carat Weight 0.30 CARAT  
 Color Grade F  
 Clarity Grade SI 1  
 Cut Grade EXCELLENT  
 Polish VERY GOOD  
 Symmetry VERY GOOD  
 Fluorescence NONE  
 Inscription(s) LABGROWN IGI  
 LG459129561

Comments: HEARTS & ARROWS  
 As Grown - No indication of post-growth treatment.  
 This Laboratory Grown Diamond was created by High Pressure High Temperature (HPHT) growth process.  
 Type II

### IGI LABORATORY GROWN DIAMOND ID REPORT

05/28/2021  
 IGI Report Number LG459129561  
 ROUND BRILLIANT  
 4.28 - 4.29 X 2.64 MM  
 Carat Weight 0.30 CARAT  
 Color Grade F  
 Clarity Grade SI 1  
 Cut Grade EXCELLENT  
 Polish VERY GOOD  
 Symmetry VERY GOOD  
 Fluorescence NONE  
 Inscription(s) LABGROWN IGI  
 LG459129561

Comments: HEARTS & ARROWS  
 As Grown - No indication of post-growth treatment.  
 This Laboratory Grown Diamond was created by High Pressure High Temperature (HPHT) growth process.  
 Type II

THIS DOCUMENT WAS PRODUCED WITH THE FOLLOWING SECURITY MEASURES: SPECIAL DOCUMENT PAPER, INK SCREENS, WATERMARK BACKGROUND DESIGN, HOLOGRAM AND OTHER SECURITY FEATURES NOT LISTED AND DO EXCEED DOCUMENT SECURITY INDUSTRY GUIDELINES.

For Terms & Conditions and to verify this report, please visit [www.igi.org](http://www.igi.org)