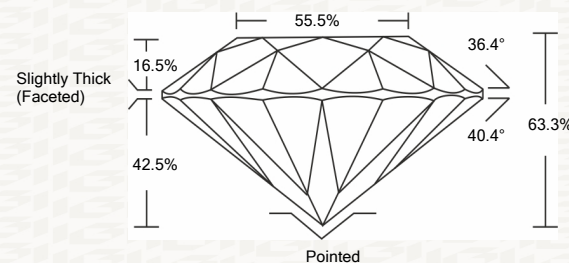




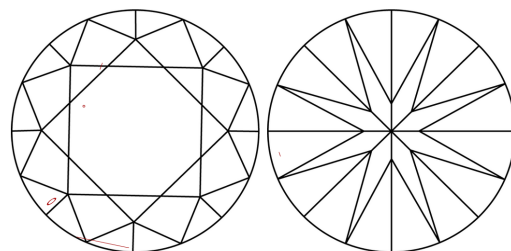
IGI GEMOLOGICAL REPORT

ADDITIONAL INFORMATION

PROPORTIONS



CLARITY CHARACTERISTICS



KEY TO SYMBOLS

Red symbols indicate internal characteristics. Green symbols indicate external characteristics.

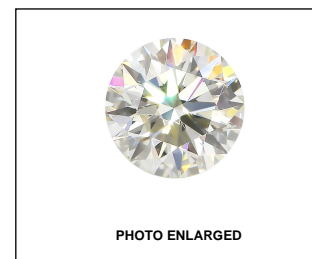
This Report is subject to the terms and conditions

© IGI 2000, edition 2019 all rights reserved.

GRADING SCALES

Table with 2 rows and 5 columns showing grading scales for Color and Clarity.

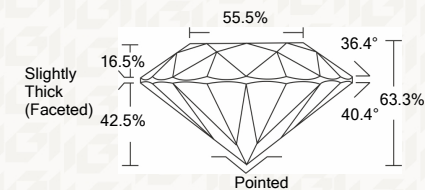
The laboratory grown diamond described in this Report (Report) has been graded, tested, analyzed, examined and/or inscribed by International Gemological Institute (I.G.I.).



THE DOCUMENT WAS PRODUCED THE FOLLOWING SECURITY MEASURES: SPECIAL DOCUMENT BACKGROUND DESIGNS HOLOGRAM AND OTHER SECURITY FEATURES NOT LISTED AND DO EXIST.

IGI LABORATORY GROWN DIAMOND GRADING REPORT

02/03/2021 IGI Report Number LG459130917 Shape and Cutting Style ROUND BRILLIANT Measurements 8.23 - 8.25 X 5.22 MM GRADING RESULTS Carat Weight 2.22 CARATS Color Grade J Clarity Grade SI 1 Cut Grade EXCELLENT



ADDITIONAL GRADING INFORMATION

Polish EXCELLENT Symmetry EXCELLENT Fluorescence NONE Inscription(s) LABGROWN IGI LG459130917

Comments: This Laboratory Grown Diamond was created by Chemical Vapor Deposition (CVD) growth process and may include post-growth treatment. Type IIa



IGI

02/03/2021 IGI Report No. LG459130917 ROUND BRILLIANT 8.23 - 8.25 X 5.22 MM 2.22 CARATS J SI 1 EXCELLENT 63.3% 55.5% Slightly Thick (Faceted) Polished EXCELLENT EXCELLENT NONE LABGROWN IGI LG459130917

Comments: This Laboratory Grown Diamond was created by Chemical Vapor Deposition (CVD) growth process and may include post-growth treatment. Type IIa

