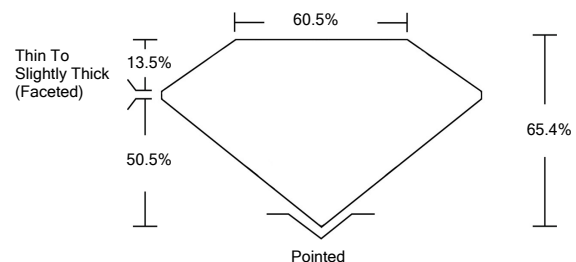




LG459188222

LABORATORY GROWN DIAMOND REPORT

PROPORTIONS



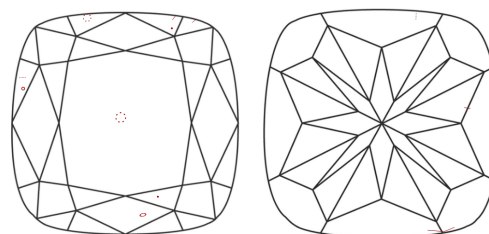
GRADING SCALES

Table with 5 columns for Color Grading Scale (CL, NC, FT, VLT, LT) and 5 columns for Clarity (10x) Grading Scale (FL, IF, VVS, VS, SI, I). Includes sub-labels like 'COLORLESS D-F', 'NEAR COLORLESS G-J', etc.

The laboratory grown diamond described in this Report (Report) has been graded, tested, analyzed, examined and/or inscribed by International Gemological Institute (IGI). A laboratory grown diamond is one that has essentially the same chemical, physical and optical properties as a mined diamond...

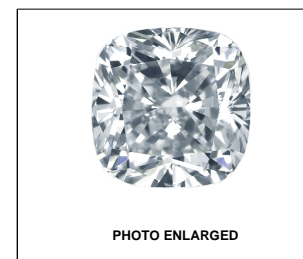
© INTERNATIONAL GEMOLOGICAL INSTITUTE, INC.

CLARITY CHARACTERISTICS



KEY TO SYMBOLS

Red symbols indicate internal characteristics. Green symbols indicate external characteristics.



LABGROWN IGI LG459188222

LASERSCRIBE<sup>SM</sup>

01/13/2021

IGI Report Number LG459188222

Shape and Cutting Style SQUARE CUSHION MODIFIED BRILLIANT

Measurements 8.73 x 8.50 x 5.56 mm

GRADING RESULTS

Carat Weight 3.04 CARATS

Color Grade I

Clarity Grade VS 2

ADDITIONAL GRADING INFORMATION

Polish EXCELLENT

Symmetry EXCELLENT

Fluorescence NONE

Inscription(s) LABGROWN IGI LG459188222

Comments: This Laboratory Grown Diamond was created by Chemical Vapor Deposition (CVD) growth process. Type IIa



IGI

01/13/2021 IGI Report No. LG459188222 SQUARE CUSHION MODIFIED BRILLIANT 8.73 x 8.50 x 5.56 mm 3.04 CARATS I VS 2 65.4% 60.5% Thin To Slightly Thick (Faceted) Pointed EXCELLENT EXCELLENT NONE LABGROWN IGI LG459188222

This Laboratory Grown Diamond was created by Chemical Vapor Deposition (CVD) growth process. Type IIa

