



LG459189032

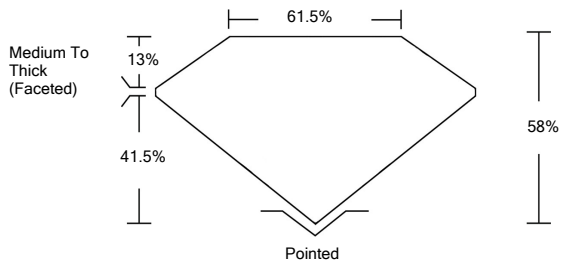
LABORATORY GROWN DIAMOND REPORT

01/11/2021
IGI Report Number LG459189032
Shape and Cutting Style PEAR BRILLIANT
Measurements 8.66 x 5.84 x 3.39 mm
GRADING RESULTS
Carat Weight 1.01 CARAT
Color Grade G
Clarity Grade SI 2

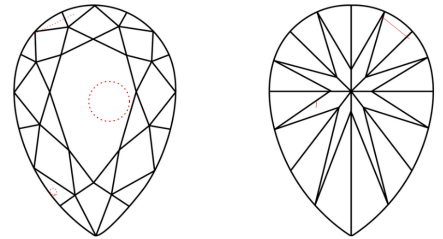
ADDITIONAL GRADING INFORMATION
Polish VERY GOOD
Symmetry VERY GOOD
Fluorescence NONE
Inscription(s) LABGROWN IGI LG459189032

Comments: This Laboratory Grown Diamond was created by Chemical Vapor Deposition (CVD) growth process. Type IIa

PROPORTIONS



CLARITY CHARACTERISTICS

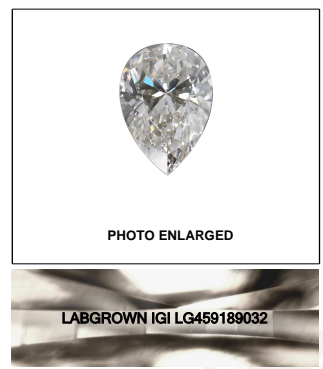


KEY TO SYMBOLS
Red symbols indicate internal characteristics.
Green symbols indicate external characteristics.

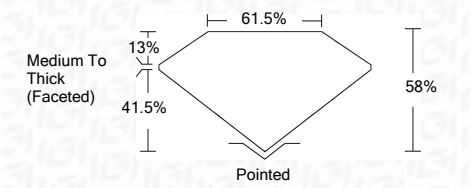
GRADING SCALES

Table with 5 columns for Color Grading Scale (CL, NC, FT, VLT, LT) and Clarity (10x) Grading Scale (FL, IF, VVS, VS, SI, I).

The laboratory grown diamond described in this Report (Report) has been graded, tested, analyzed, examined and/or inscribed by International Gemological Institute (IGI). A laboratory grown diamond is one that has essentially the same chemical, physical and optical properties as a mined diamond...



01/11/2021
IGI Report Number LG459189032
Shape and Cutting Style PEAR BRILLIANT
Measurements 8.66 x 5.84 x 3.39 mm
GRADING RESULTS
Carat Weight 1.01 CARAT
Color Grade G
Clarity Grade SI 2



ADDITIONAL GRADING INFORMATION
Polish VERY GOOD
Symmetry VERY GOOD
Fluorescence NONE
Inscription(s) LABGROWN IGI LG459189032

Comments: This Laboratory Grown Diamond was created by Chemical Vapor Deposition (CVD) growth process. Type IIa



01/11/2021
IGI Report No. LG459189032
PEAR BRILLIANT
8.66 x 5.84 x 3.39 mm
Carat Weight 1.01 CARAT
Color Grade G
Clarity Grade SI 2
Depth 58%
Table 61.5%
Girdle Medium To Thick (Faceted)
Culet Pointed
Polish VERY GOOD
Symmetry VERY GOOD
Fluorescence NONE
Inscription(s) LABGROWN IGI LG459189032
Comments: This Laboratory Grown Diamond was created by Chemical Vapor Deposition (CVD) growth process. Type IIa