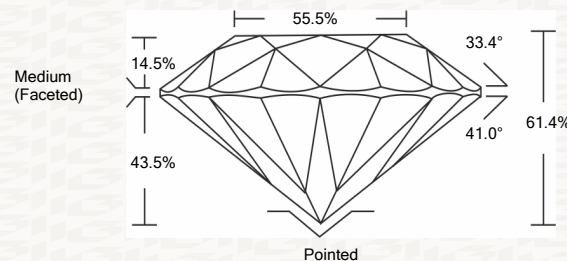




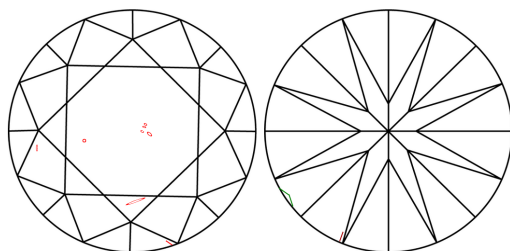
IGI GEMOLOGICAL REPORT

ADDITIONAL INFORMATION

PROPORTIONS



CLARITY CHARACTERISTICS



KEY TO SYMBOLS

Red symbols indicate internal characteristics. Green symbols indicate external characteristics.

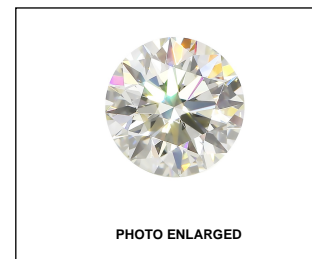
This Report is subject to the terms and conditions

© IGI 2000, edition 2019 all rights reserved.

GRADING SCALES

Table with 2 rows and 5 columns: COLOR GRADING SCALE (CL, NC, FT, VLT, LT) and CLARITY (10x) GRADING SCALE (FL, IF, VVS, VS, SI, I)

The laboratory grown diamond described in this Report (Report) has been graded, tested, analyzed, examined and/or inscribed by International Gemological Institute (I.G.I.)...



LASERSCRIBE SM



THE DOCUMENT WAS PRODUCED THE FOLLOWING SECURITY MEASURES: SPECIAL DOCUMENT PAPER, INK SCREENS, WATERMARK BACKGROUND DESIGNS HOLOGRAM AND OTHER SECURITY FEATURES NOT LISTED AND DO EXCEED DOCUMENT SECURITY INDUSTRY DUPLINES

IGI LABORATORY GROWN DIAMOND GRADING REPORT

01/25/2021

IGI Report Number LG459193452

Shape and Cutting Style ROUND BRILLIANT

Measurements 6.77 - 6.80 X 4.16 MM

GRADING RESULTS

Carat Weight 1.16 CARAT

Color Grade E

Clarity Grade SI 1

Cut Grade IDEAL

ADDITIONAL GRADING INFORMATION

Polish EXCELLENT

Symmetry EXCELLENT

Fluorescence NONE

Inscription(s) LABGROWN IGI LG459193452

Comments:As Grown - No indication of post-growth treatment. This Laboratory Grown Diamond was created by High Pressure High Temperature (HPHT) growth process. Type II



IGI LABORATORY GROWN DIAMOND GRADING REPORT

01/25/2021

IGI Report Number LG459193452

Shape and Cutting Style ROUND BRILLIANT

Measurements 6.77 - 6.80 X 4.16 MM

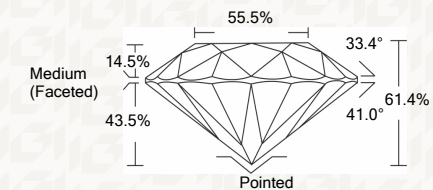
GRADING RESULTS

Carat Weight 1.16 CARAT

Color Grade E

Clarity Grade SI 1

Cut Grade IDEAL



ADDITIONAL GRADING INFORMATION

Polish EXCELLENT

Symmetry EXCELLENT

Fluorescence NONE

Inscription(s) LABGROWN IGI LG459193452

Comments: As Grown - No indication of post-growth treatment. This Laboratory Grown Diamond was created by High Pressure High Temperature (HPHT) growth process. Type II



IGI

01/25/2021 IGI Report No. LG459193452

ROUND BRILLIANT 6.77 - 6.80 X 4.16 MM

Carat Weight 1.16 CARAT Color Grade E Clarity Grade SI 1 Cut Grade IDEAL Depth 61.4% Table 55.5% Girdle Medium (Faceted)

Culet Polished Polish EXCELLENT Symmetry EXCELLENT Fluorescence NONE Inscription(s) LABGROWN IGI LG459193452

Comments: As Grown - No indication of post-growth treatment. This Laboratory Grown Diamond was created by High Pressure High Temperature (HPHT) growth process. Type II