



IGI GEMOLOGICAL REPORT

IGI LABORATORY GROWN DIAMOND GRADING REPORT

02/12/2021
IGI Report Number LG462132946
Shape and Cutting Style ROUND BRILLIANT
Measurements 7.24 - 7.28 X 4.55 MM

GRADING RESULTS

Carat Weight 1.50 CARAT
Color Grade I
Clarity Grade SI 1
Cut Grade EXCELLENT

ADDITIONAL GRADING INFORMATION

Polish EXCELLENT
Symmetry EXCELLENT
Fluorescence NONE

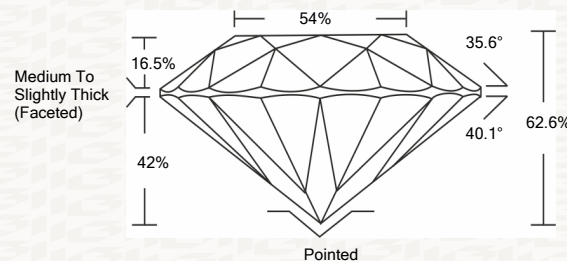
Inscription(s) LABGROWN IGI LG462132946

Comments: This Laboratory Grown Diamond was created by Chemical Vapor Deposition (CVD) growth process and may include post-growth treatment. Type IIa

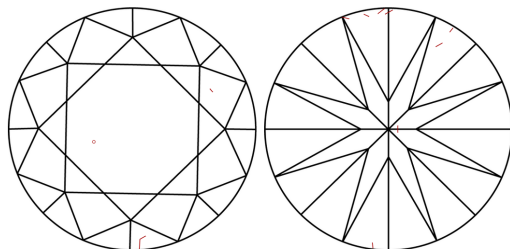


ADDITIONAL INFORMATION

PROPORTIONS



CLARITY CHARACTERISTICS



KEY TO SYMBOLS

Red symbols indicate internal characteristics. Green symbols indicate external characteristics.

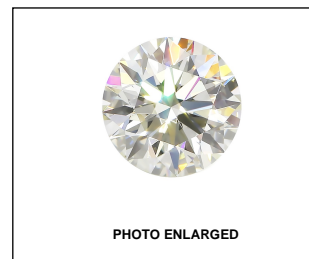
This Report is subject to the terms and conditions

© IGI 2000, edition 2019 all rights reserved.

GRADING SCALES

Table with 2 rows and 5 columns: COLOR GRADING SCALE (CL, NC, FT, VLT, LT) and CLARITY (10x) GRADING SCALE (FL, IF, VVS, VS, SI, I).

The laboratory grown diamond described in this Report (Report) has been graded, tested, analyzed, examined and/or inscribed by International Gemological Institute (IGI). A laboratory grown diamond is one that has essentially the same chemical, physical and optical properties as a mined diamond...



LASERSCRIBE SM



THE DOCUMENT WAS PRODUCED THE FOLLOWING SECURITY MEASURES: SPECIAL DOCUMENT BACKGROUND DESIGNS HOLOGRAM AND OTHER SECURITY FEATURES NOT LISTED AND DO EXIST. SECURITY INDUSTRY DUPLICATES

IGI LABORATORY GROWN DIAMOND GRADING REPORT

02/12/2021
IGI Report Number LG462132946
Shape and Cutting Style ROUND BRILLIANT
Measurements 7.24 - 7.28 X 4.55 MM

GRADING RESULTS

Carat Weight 1.50 CARAT
Color Grade I
Clarity Grade SI 1
Cut Grade EXCELLENT

ADDITIONAL GRADING INFORMATION

Polish EXCELLENT
Symmetry EXCELLENT
Fluorescence NONE
Inscription(s) LABGROWN IGI LG462132946

Comments: This Laboratory Grown Diamond was created by Chemical Vapor Deposition (CVD) growth process and may include post-growth treatment. Type IIa



IGI

02/12/2021
IGI Report No LG462132946
ROUND BRILLIANT
7.24 - 7.28 X 4.55 MM
Carat Weight 1.50 CARAT
Color Grade SI 1
Clarity Grade EXCELLENT
Depth 62.6%
Table 54%
Girdle Medium To Slightly Thick (Faceted)
Culet Pointed
Polish EXCELLENT
Symmetry EXCELLENT
Fluorescence NONE
Inscription(s) LABGROWN IGI LG462132946
Comments: This Laboratory Grown Diamond was created by Chemical Vapor Deposition (CVD) growth process and may include post-growth treatment. Type IIa